

MODEL 453

WIND LOAD ALUMINUM FULL-VIEW



MODERN APPEAL FOR WIND LOAD AREAS

Wayne Dalton's Aluminum Full-View doors are the preferred choice when visibility and light transmission are just as important as design. Perfect for commercial applications such as auto dealerships, car washes and restaurant patios where aesthetics are a priority, Model 453 is weather-resistant, and virtually maintenance-free.

This door is built to meet local building codes, including Florida Building Code, Static and Impact approvals, providing protection from a variety of wind conditions, such as hurricane force winds.

- » STANDARD SIZES UP TO 20'1" HIGH AND 20'2" WIDE
- » VARIETY OF GLASS AND FINISH OPTIONS
- » DURABLE CONSTRUCTION
- » WIND LOAD PROTECTION

MODEL 453

STANDARD FEATURES OVERVIEW

THERMAL EFFICIENCY

R-VALUE* Up to 4.09 (optional insulation)

CONSTRUCTION

MAX HEIGHT 20' 1" (6,121 mm)

MAX WIDTH 20' 2" (6,157 mm)

DOOR ASSEMBLY Stile and rail assembly of extruded 6061-T6 aluminum, 1 3/8" thick stiles and rails, joined with self-tapping screws

RAILS Top and bottom rails with 2 3/8" wide, lower intermediate rail 1 19/32", upper rail 2 3/8", minimum wall thickness 0.062"

STILES Single end stiles are 3 5/16" wide, center stile 2 11/16" wide, minimum wall thickness 0.062"

SPRINGS 10,000 cycles

GLAZING 1/8" (3mm) in 4 options, 1/4" (6 mm) in 6 options, 3/8" (10 mm) in 2 options, 5/8" (16 mm) in 2 options

FINISH Clear Anodized

WIND LOAD Provide to meet the design/performance requirements specified

LOCK Galvanized, interior-mounted single unit

WEATHERSTRIPPING Flexible bulb-type strip at bottom section

TRACK 2" (51 mm)

OPERATION Manual pull rope or chain hoist

WARRANTY

TERMS One (1) year limited warranty on door systems

OPTIONS

- Springs: 25,000, 50,000, 75,000 or 100,000 cycles
- Electric motor operation: Provide UL listed electric operator, equal to Genie Commercial Operators, size and type as recommended by manufacturer to move door in either direction at not less than 2/3 foot or more than 1 foot per second
- Lock options: Interior mounted slide lock with interlock switch for automatic operator, keyed lock, keyed lock with interlock switch for automatic operator
- Bottom sensing edge
- Weather stripping: Jamb and header seals
- Powder coat finishes: Color as selected by architect from manufacturer's standard colors
- Anodized finishes: Light Bronze, Medium Bronze, Dark Bronze, Black
- Exhaust ports
- Bracket mounting
- 3" track

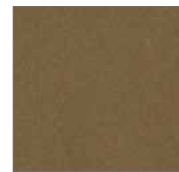
*Wayne Dalton uses a calculated door section R-value and U-value for our insulated doors.

FINISH OPTIONS

Anodized Finishes



Clear (Standard)



Light Bronze



Medium Bronze



Dark Bronze



Black

Actual door colors may vary from brochure photos due to fluctuations in the printing process. Always request a color sample from your Wayne Dalton Dealer for accurate color matching.

RAL POWDER COAT FINISHES

Approximately 200 optional RAL powder coat colors are also available.





Architect Resource Center

Visit wayne-dalton.com/architect-resource-center to find our Architect Resource Center. In this tool, you will quickly find all of the specifications, drawings and documents you need to complete your project.

Wayne Dalton
GARAGE DOORS

DISTRIBUTED BY:

2501 S. State Hwy. 121 Bus., Ste 200
Lewisville, TX 75067

wayne-dalton.com

