

MODEL 884 ADV-XTREME

EXTERIOR MAXIMUM STRENGTH HIGH SPEED, HIGH PERFORMANCE FABRIC DOOR



Strutted exterior door for high wind pressures

PERFORMANCE UNDER PRESSURE

- Patent-pending articulating hinged roller wind strut reduces noise and allows the door to operate under pressure
- Strutted design allows for quick panel replacement while reducing curtain deflection under pressure
- Heavy-duty .188" high strength steel guides are ideal for high pressure areas

HIGH PERFORMANCE, LOW MAINTENANCE DESIGN

- Springless design requires minimal interruption for maintenance
- Direct-mounted gear drive minimizes wear and tear
- Variable frequency drive eliminates sudden jolts from door start/stop
- Patented breakaway system design with impact detection and push button self-repair

RUGGED FABRIC CONSTRUCTION

- Ideal for exterior applications
- Rough environment interior applications

INSTALLER FRIENDLY

- Pre-assembled sub-assemblies for easier installation
- Plug and play wiring reduces need for licensed electrician

APPLICATIONS

- Manufacturing/Heavy Manufacturing
- Warehouse/Distribution
- Large opening
- Mining
- Parking garages
- Auto/Transit



MODEL 884 ADV-XTREME

EXTERIOR MAXIMUM STRENGTH HIGH SPEED, HIGH PERFORMANCE FABRIC DOOR

STANDARD FEATURES OVERVIEW

MAX WIDTH	24'
MAX HEIGHT	18' at 24' wide or 20' at 23' wide
MAX OPENING SPEED	Up to 55" per second
MAX CLOSING SPEED	Up to 40" per second
BREAKAWAY SELF RESET	Yes
WIND LOAD*	Up to 22.0 psf
HINGED WIND STRUT	4" articulating hinged roller wind strut
CURTAIN MATERIAL	3 layers of PVC-coated polyester with 2 layers of polyester weave
OPERATION	Direct drive motor and gearbox system with field changeable universal handing and door stop safety device
CONTROL PANEL	Variable frequency drive NEMA 4X cULus listed; Onboard self diagnostic and service reminder; Built-in padlockable fused disconnect
OBSTRUCTION SAFETY DETECTION	Infrared sensors mounted in-plane to the door curtain at 18" and 50"- 54" from floor
REVERSING SAFETY EDGE	Wireless reversing edge
AVAILABLE SUPPLY VOLTAGES	208V AC 3 PH†, 230V AC 3 PH, 460V AC 3PH, 575V AC 3 PH† (†Requires stand-alone mounted transformer)
HINGED GUIDES	Provide easy access for maintenance

*Wind load is the ultimate pressure tested at door width of 20'.



Wind strut with roller windlock

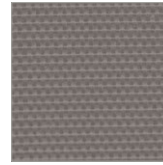


Bottom Windlock

OPTIONS

- **20" high vision panels** – spaced evenly across width of door
- **Multiple actuation options** – push button, motion detector, radio control, key switch, pull switch, loop detector, treadle switch. Wireless options available
- **Signaling devices** – red/green LED warning light, horn/strobe combination, rotating warning light
- **Programmable LED Lighting Package** – 3' tall light bar with red, yellow, green lights
- **Light curtain** – front or rear mounted; available in 3' and 6' models

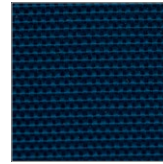
CURTAIN COLOR OPTIONS



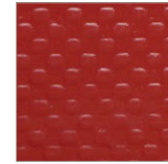
Gray



Orange



Blue



Red

Standard color for guides and bottom bar is yellow. Approximately 200 optional RAL powder coat colors are also available.



Actual colors may vary from brochure due to fluctuations in the printing process. Always request a color sample from your Wayne Dalton Dealer for accurate color matching.



Wayne Dalton

2501 S. State Hwy. 121 Bus., Ste 200
Lewisville, TX 75067

wayne-dalton.com



© 2024 Wayne Dalton, a Division of Overhead Door Corporation. Consistent with our policy of continuing product improvement, we reserve the right to change product specifications without notice or obligation.
Item W900-1055 05/24