

MODEL 887 ADV-XTREME

INTERIOR HIGH SPEED, HIGH PERFORMANCE FREEZER AND COOLER DOOR



Powerful environmental control

THERMAL PERFORMANCE

- Insulated curtain provides a barrier to prevent heat loss and condensation
- Actively heated ThermoGuides™ ensure the complete height of the guide has a uniform temperature to ensure smooth door movement
- Quad-sealed, insulated guides prevent guide condensation and conditioned air loss around the curtain

HIGH PERFORMANCE DESIGN

- Springless design requires minimal interruption for maintenance
- Direct-mounted gear drive minimizes wear and tear
- Variable frequency drive eliminates sudden jolts from door start/stop

INSTALLER FRIENDLY

- Fully-assembled curtain arrives pre-wrapped and ready for installation
- Breakaway bottom bar is easily reset from either side of the opening in case of accidental forklift contact
- Pre-wired motor, guide heater and air curtain connection and plug and play accessories reduced need for licensed electrician

SAFETY FOCUSED

- Two sets of safety photo eye sensors
- Monitored wireless reversing edge

APPLICATIONS

- Cold Storage
- Food and Beverage
- Warehouse/Distribution



MODEL 887 ADV-XTREME

INTERIOR HIGH SPEED, HIGH PERFORMANCE FREEZER AND COOLER DOOR

STANDARD FEATURES OVERVIEW

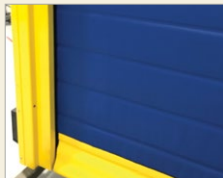
MAX WIDTH	12'
MAX HEIGHT	18'
MAX OPENING SPEED	Up to 80" per second
MAX CLOSING SPEED	Up to 40" per second
BREAKAWAY SELF RESET	Yes
WIND LOAD*	Up to 2.0 psf
CURTAIN MATERIAL	2 layers of PVC-coated polyester with polyester weave and conductive plus radiant insulation. Application-dependent ambient or heated air curtain
OPERATION	Direct drive motor and gearbox system with field changeable universal handing and door stop safety device
CONTROL PANEL	Variable frequency drive NEMA 4X cULus listed; Onboard self diagnostic and service reminder; Built-in padlockable fused disconnect; Includes power for guide heater and air curtain
GUIDE DESIGN	Thermally broken, with active heat, quad brush seals and front/rear breakaway capabilities
OBSTRUCTION SAFETY DETECTION	Infrared sensors mounted in-plane to the door curtain at 16" and 50" - 54" from floor
REVERSING SAFETY EDGE	Wireless reversing edge
AVAILABLE SUPPLY VOLTAGES**	230V AC 3 PH, 460V AC 3 PH, 575V AC 3 PH† (†Requires stand-alone mounted transformer)

*Wind load is the ultimate pressure tested at door width of 10'.

**Applications with air curtain may require 460V or 575V.



Guide heater



Bottom breakaway

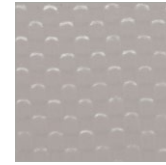
OPTIONS

- **Multiple actuation options** – push button, motion detector, radio control, key switch, pull switch, loop detector, treadle switch. Wireless options available
- **Signaling devices** – red/green LED warning light, horn/strobe combination, rotating warning light
- **Programmable LED Lighting Package** – 3' tall light bar with red, yellow, green lights

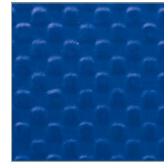
CURTAIN COLOR OPTIONS



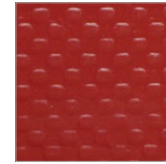
White



Gray



Blue



Red

Standard color for guides and bottom bar is yellow. Approximately 200 optional RAL powder coat colors are also available.



Actual colors may vary from brochure due to fluctuations in the printing process. Always request a color sample from your Wayne Dalton Dealer for accurate color matching.



Wayne Dalton

2501 S. State Hwy. 121 Bus., Ste 200
Lewisville, TX 75067

wayne-dalton.com



© 2024 Wayne Dalton, a Division of Overhead Door Corporation. Consistent with our policy of continuing product improvement, we reserve the right to change product specifications without notice or obligation.
Item W900-1159 05/24