

# MODEL C-2400

SECTIONAL STEEL DOORS



Model C-2400, White finish

## **STRONG, VISUAL APPEALING DOORS FOR MEDIUM DUTY COMMERCIAL APPLICATIONS**

The Wayne Dalton C-2400 Sectional Steel Door is an excellent value and is available in a variety of sizes.

Featuring nominal 24-gauge ribbed steel sections, the C-2400 is available with a number of lite and insulation options.

- » NOMINAL 24-GAUGE STEEL CONSTRUCTION
- » STANDARD SIZES UP TO 16'1" HIGH AND 20'2" WIDE
- » DESIGNED FOR MEDIUM DUTY COMMERCIAL APPLICATIONS
- » TONGUE-AND-GROOVE JOINT PROFILE

# MODEL C-2400

## STANDARD FEATURES OVERVIEW

### THERMAL EFFICIENCY

R-VALUE*	7.64 (with optional insulation)
U-VALUE*	0.13 (with optional insulation)

### CONSTRUCTION

MAX HEIGHT	16'1" (4,907 mm)
MAX WIDTH	20'2" (6,157 mm)
EXTERIOR STEEL	Nominal 24-gauge
EXTERIOR SURFACE	Smooth or stucco-embossed (both ribbed)
STANDARD SPRINGS	10,000 cycles
EXTERIOR COLOR	White, Brown
JOINT PROFILE	Tongue-and-groove

### WARRANTY

TERMS	Twelve (12) month limited
-------	---------------------------

### OPTIONS

- Vision lites
- Aluminum full-view sections
- Chain hoist operation
- Motor operation
- Sensing edges
- Photo eyes
- High cycle spring (25k, 50k, 100k)
- 3" track option
- Solid shafts
- Perimeter weatherseal
- Special track designs
- Mullions

### ADDITIONAL OPTIONS FOR COMMERCIAL SECTIONAL DOORS

**Simple Install System** - Wayne Dalton's track and hardware system provides for easy, one person installation. Components include: one-piece vertical lift track and simplified hardware.

**Impact Section** - Wayne Dalton's Impact Section is the perfect solution for doors exposed to damage from fork lifts and other warehouse traffic. Impact resistant composite skins surround an expanded polystyrene core. The Impact Section is adjustable to multiple door thicknesses.

\*Wayne Dalton uses a calculated door section R-value and U-value for our insulated doors

**The Wayne Dalton C-2400 Sectional Steel Door is designed and built to ensure an economical, low maintenance long life for moderate commercial use.**

Available with a smooth or stucco-embossed finish in white or brown, the exterior of the C-2400 features a ribbed surface for increased strength and added visual appeal. The door's unique box-stile design, with a full, 2" thickness and 3" width, plus tongue-and-groove construction, adds vertical stability and strength. The stiles are bonded to the skin surface with high strength adhesive, resulting in the strongest possible unit.

### MATERIALS AND CONSTRUCTION

Wayne Dalton's C-2400 Sectional Steel Doors feature pre-finished interior and exterior skins on nominal 24-gauge hot-dipped galvanized steel sections roll-formed for ultimate strength and durability. Fully-fitted 3" wide boxed stiles are adhered with adhesive, preventing rust and leakage associated with rivets.

The standard bottom door seal, along with optional seals on the perimeter and between sections, greatly reduce air leakage, adding to the thermal efficiency of the building.

Additional options include insulation and weather stripping that provide a U-value of 0.13 and an R-value\* of 7.64; factory-installed vision lites or aluminum full-view sections; electric operator; and special engineering to meet wind load requirements.

Contact Wayne Dalton for additional sizes and colors.

Wind load options available



# SECTIONAL STEEL DOORS



Model C-2400, White finish

## LITE OPTIONS

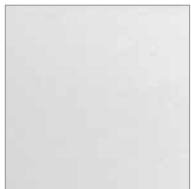


Vision lites



Full-view lites

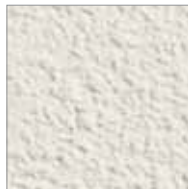
## FINISH OPTIONS



White Smooth Finish



Brown Smooth Finish



White Stucco-Embossed Finish



Brown Stucco-Embossed Finish

## GENERAL OPERATING CLEARANCES

TYPE	HEADROOM		SIDEROOM		DEPTH INTO ROOM	CENTER LINE OF SPRINGS	
	2" TRACK	3" TRACK	2" TRACK	3" TRACK	2" AND 3" TRACK	2" TRACK	3" TRACK
Standard Lift Manual 12" R	13"-17"	NA	4.5"	5.5"	Opening Height +18"	Opening Height +12"	N/A
Standard Lift Manual 15" R	15"-20"	16"-21"				Opening Height +13"	Opening Height +14"
Standard Lift Motor Oper. 12" R	15"-20"	NA			Opening Height +66"	Opening Height +12"	N/A
Standard Lift Motor Oper. 15" R	15"-20"	18"-24"				Opening Height +13"	Opening Height +14"
High Lift Manual	High Lift +12"		24" One Side		Opening Height -Lift +30"	Opening Height +Lift +6.5"	Opening Height +Lift +7.5"
High Lift Motor Oper.							
Vertical Lift Manual	Door Height +20"		4.5"	5.5"	18"	Double Door Height +13"	
Vertical Lift Motor Oper.			24" One Side				
Low Headroom Manual*	6"-15"	6"-15"	6"	9"	Opening Height +20" to -26"	N/A	
Low Headroom Motor Oper.*	9"-17"	9"-17"			Opening Height +66"		

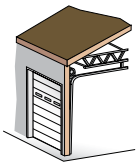
### NOTES:

- For low headroom, springs must be rear mount to achieve minimum headroom listed. Front mount torsion headroom depends on drum size, and varies over the range listed. See approval drawing.
- Side-room of 8" required, one side, for doors with chain hoist.
- Headroom depends on drum size, and varies over the range listed. See approval drawing.

## PANEL/SECTION SELECTION GUIDE

DOOR WIDTH	NUMBER OF PANELS	MAXIMUM NUMBER OF LITES	DOOR HEIGHT	NUMBER OF SECTIONS
Up to 8'3"	2	2	Up to 8'1"	4
8'4" to 12'3"	3	3	8'4" to 10'1"	5
12'4" to 16'3"	4	4	10'4" to 12'1"	6
16'4" to 20'3"	5	5	12'4" to 14'1"	7
For Larger Sizes – See C-24			14'4" to 16'1"	8

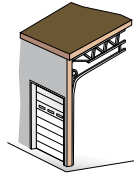
## TRACK SELECTION GUIDE



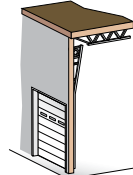
**STANDARD LIFT**



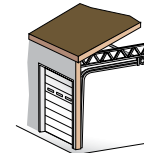
**HIGH LIFT**  
break-away is standard, straight incline is available



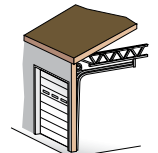
**ROOF PITCH**  
standard or high lift



**VERTICAL LIFT**  
break-away is standard, straight incline is available



**LOW HEADROOM**  
rear mount torsion



**LOW HEADROOM**  
front mount torsion



## Architect Resource Center

Visit [wayne-dalton.com/architect-resource-center](http://wayne-dalton.com/architect-resource-center) to find our Architect Resource Center. In this tool, you will quickly find all of the specifications, drawings and documents you need to complete your project.

**Wayne Dalton**  
COMMERCIAL DOORS

DISTRIBUTED BY:

2501 S. State Hwy. 121 Bus., Ste 200  
Lewisville, TX 75067

[wayne-dalton.com](http://wayne-dalton.com)

