

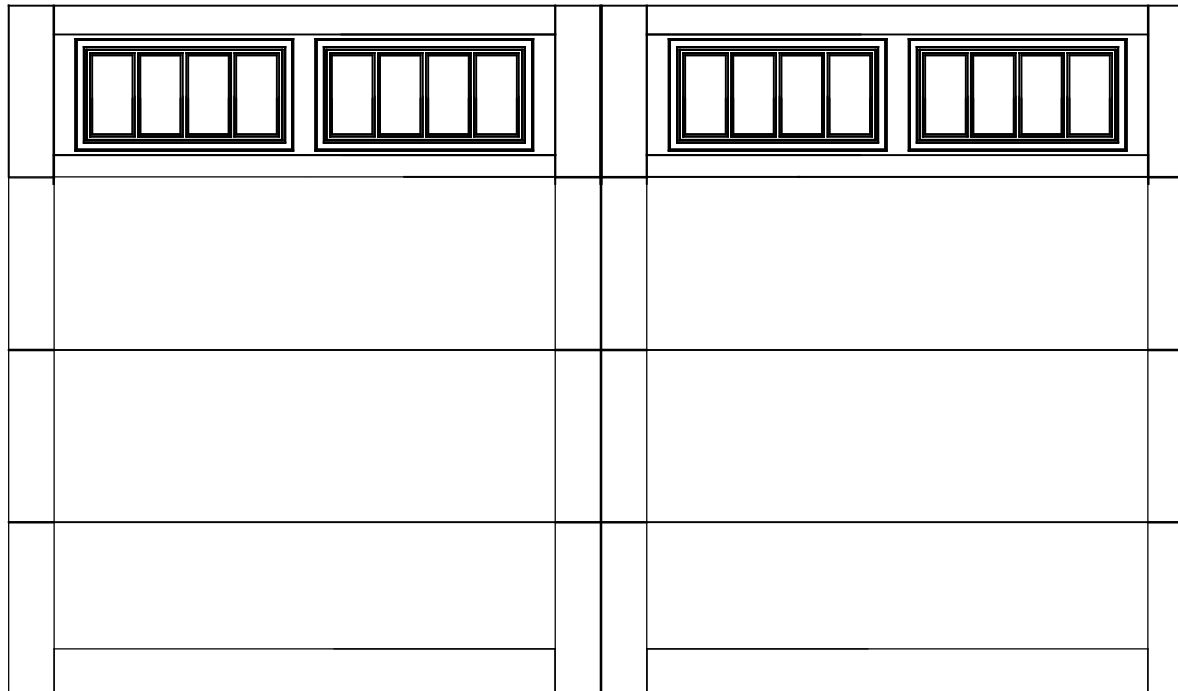


WAYNE-DALTON, A DIVISION OF THE  
OVERHEAD DOOR CORP.

## EXTERIOR VIEW

WAYNE-DALTON CONFIDENTIAL PROPRIETARY  
NOT TO BE DUPLICATED OR REPRINTED WITHOUT  
WRITTEN PERMISSION FROM OVERHEAD DOOR CORP.

[WWW.WAYNE-DALTON.COM](http://WWW.WAYNE-DALTON.COM)



12x7 6600 ARLINGTON  
4 SECTION/2 PANEL  
FRAMED STOCKBRIDGE TOP SECTION SHOWN  
CONSISTS OF (4) 20.8" SECTIONS