

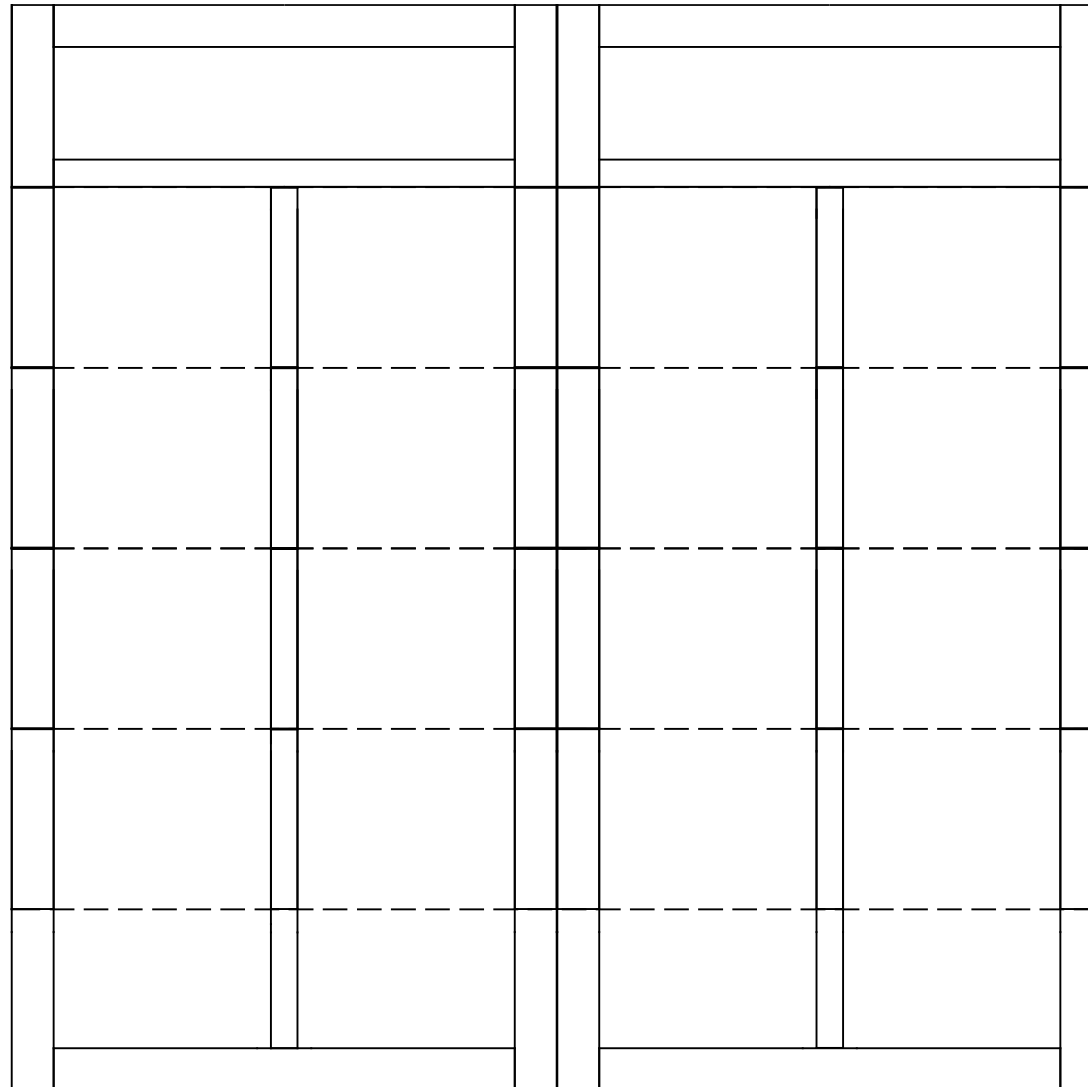


WAYNE DALTON, A DIVISION OF THE
OVERHEAD DOOR CORP.

EXTERIOR VIEW

WAYNE DALTON CONFIDENTIAL PROPRIETARY
NOT TO BE DUPLICATED OR REPRINTED WITHOUT
WRITTEN PERMISSION FROM OVERHEAD DOOR CORP.

WWW.WAYNE-DALTON.COM



12x12 6600 SOMERSET
6 SECTION/2 PANEL
SOLID SQUARE TOP SECTION SHOWN
CONSISTS OF (6) 24" SECTIONS