

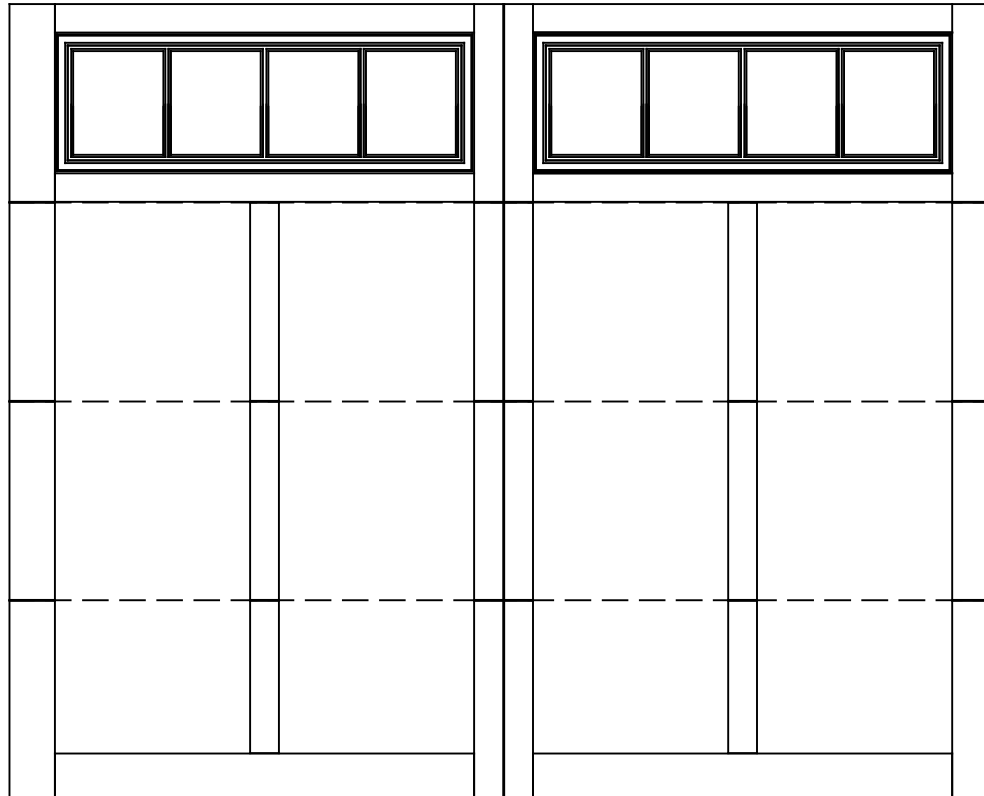


WAYNE DALTON, A DIVISION OF THE
OVERHEAD DOOR CORP.

EXTERIOR VIEW

WAYNE-DALTON CONFIDENTIAL PROPRIETARY
NOT TO BE DUPLICATED OR REPRINTED WITHOUT
WRITTEN PERMISSION FROM OVERHEAD DOOR CORP.

WWW.WAYNE-DALTON.COM



10x8 6600 SOMERSET
4 SECTION/2 PANEL
FRAMED STOCKBRIDGE TOP SECTION SHOWN
CONSISTS OF (4) 24.0" SECTIONS