

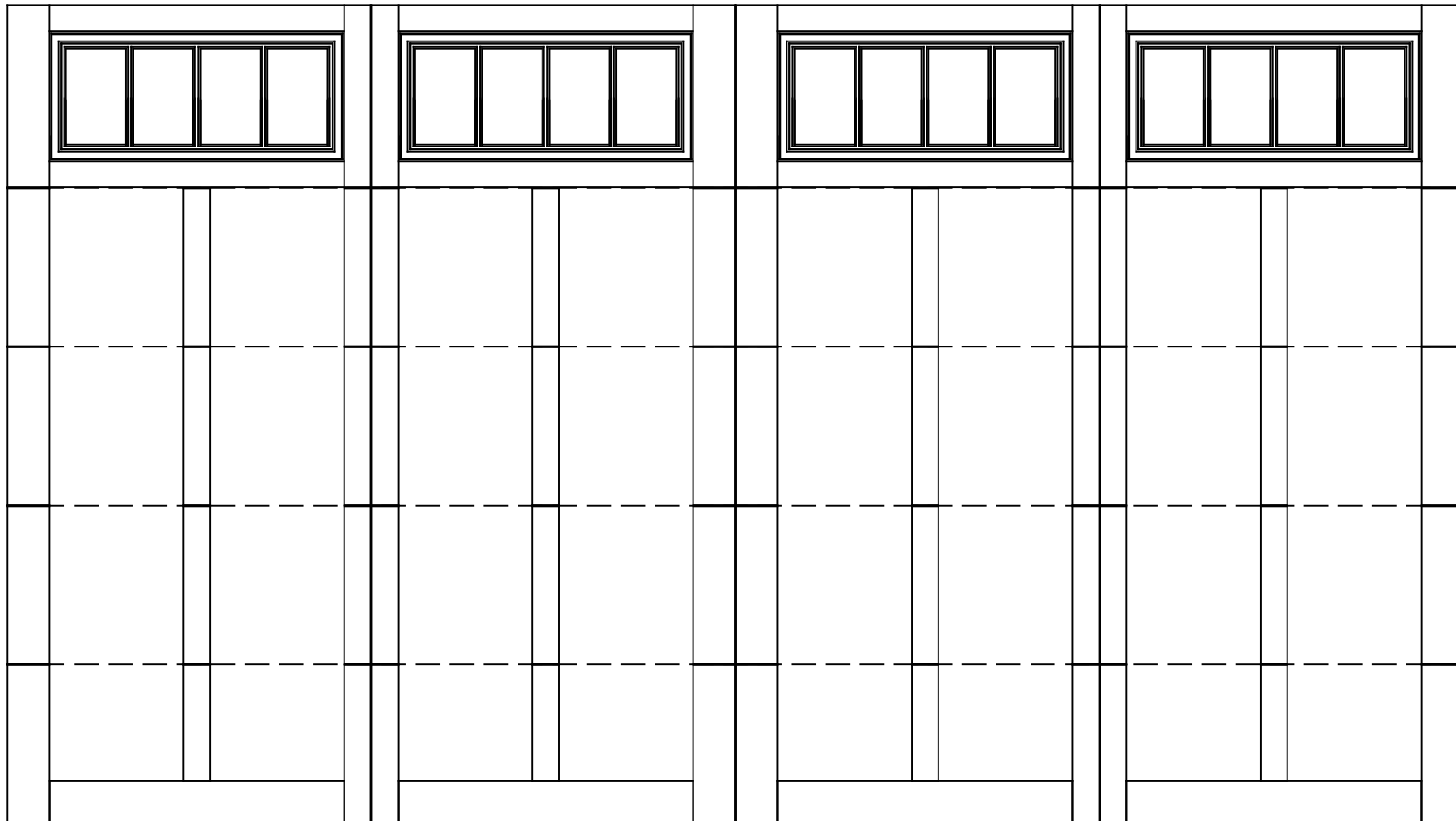


WAYNE DALTON, A DIVISION OF THE
OVERHEAD DOOR CORP.

EXTERIOR VIEW

WAYNE-DALTON CONFIDENTIAL PROPRIETARY
NOT TO BE DUPLICATED OR REPRINTED WITHOUT
WRITTEN PERMISSION FROM OVERHEAD DOOR CORP.

WWW.WAYNE-DALTON.COM



16'x9' 6600 SOMERSET
5 SECTION/4 PANEL
FRAMED STOCKBRIDGE TOP SECTION SHOWN
CONSISTS OF (4) 20.8" SECTIONS AND (1) 24.0" SECTIONS