

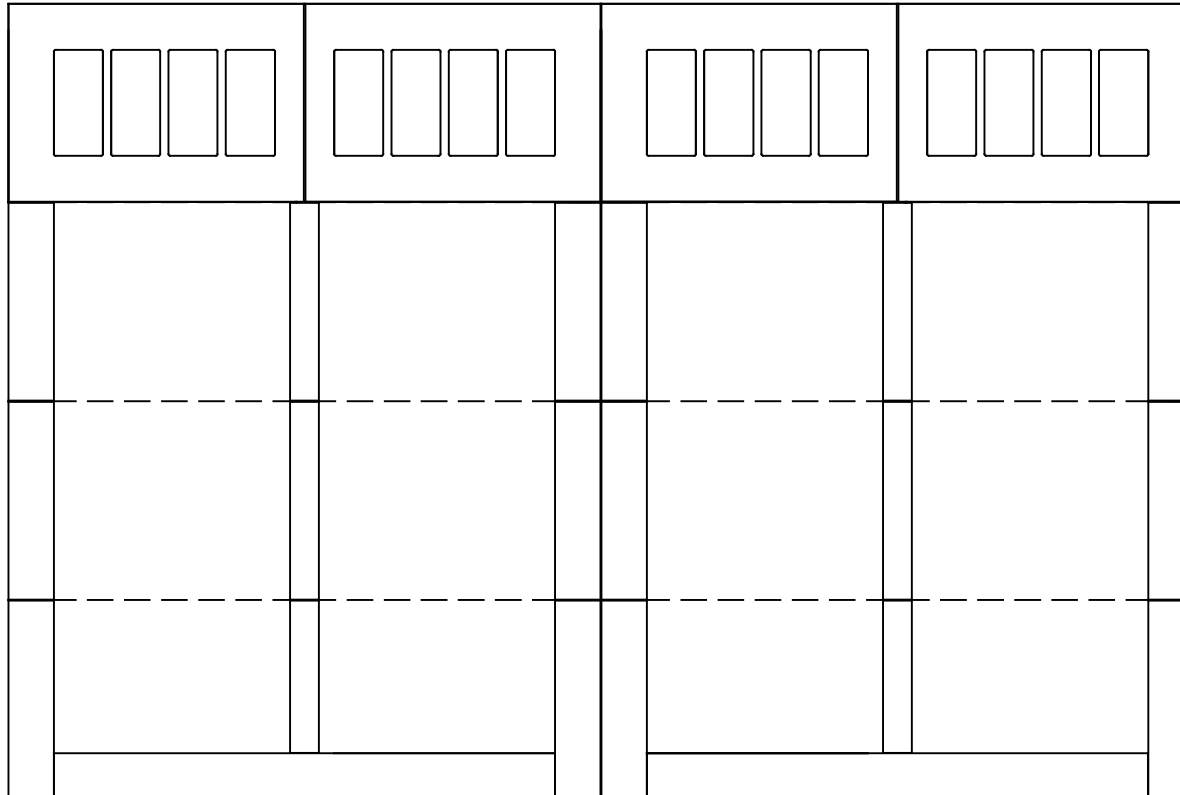


WAYNE DALTON, A DIVISION OF THE  
OVERHEAD DOOR CORP.

# EXTERIOR VIEW

WAYNE-DALTON CONFIDENTIAL PROPRIETARY  
NOT TO BE DUPLICATED OR REPRINTED WITHOUT  
WRITTEN PERMISSION FROM OVERHEAD DOOR CORP.

[WWW.WAYNE-DALTON.COM](http://WWW.WAYNE-DALTON.COM)



12x8 6600 SOMERSET  
4 SECTION/4 PANEL  
ROUTED STOCKBRIDGE TOP SECTION SHOWN  
CONSISTS OF (4) 24.0" SECTIONS