

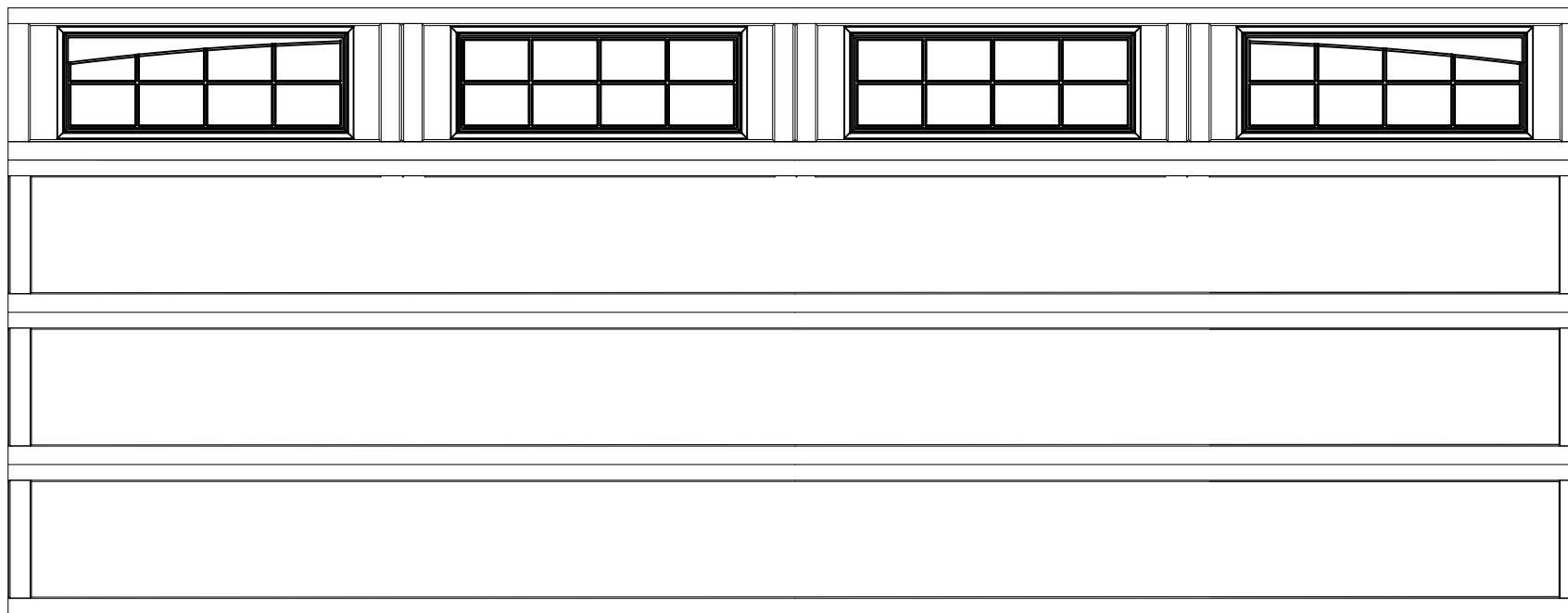


WAYNE DALTON, A DIVISION OF THE  
OVERHEAD DOOR CORP.

## *EXTERIOR VIEW*

WAYNE DALTON CONFIDENTIAL PROPRIETARY  
NOT TO BE DUPLICATED OR REPRINTED WITHOUT  
WRITTEN PERMISSION FROM OVERHEAD DOOR CORP.

[WWW.WAYNE-DALTON.COM](http://WWW.WAYNE-DALTON.COM)



18'0" X 7'0" 9405 CAMDEN DESIGN  
4 SECTION/1 PANEL  
SINGLE ARCHSTOCKTON III TOP SECTION SHOWN  
CONSISTS OF (4) 20.8" SECTIONS