

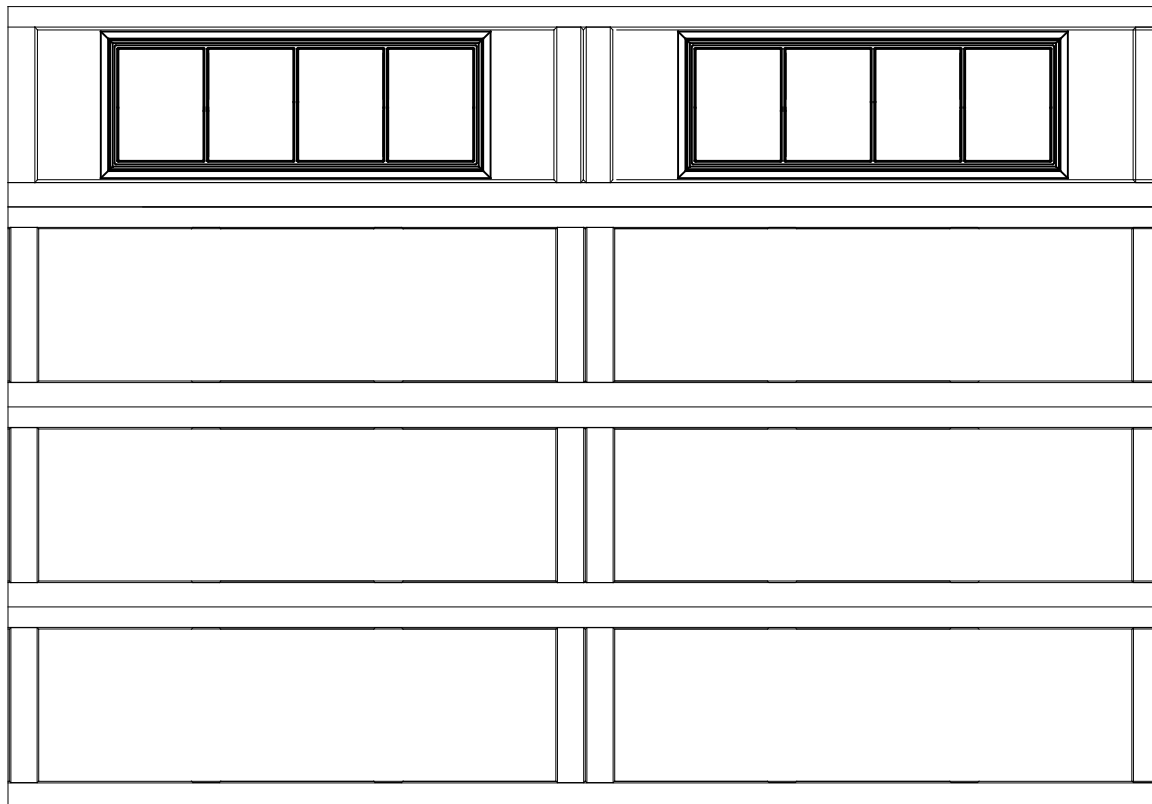


WAYNE-DALTON, A DIVISION OF THE  
OVERHEAD DOOR CORP.

# *EXTERIOR VIEW*

WAYNE-DALTON CONFIDENTIAL PROPRIETARY  
NOT TO BE DUPLICATED OR REPRINTED WITHOUT  
WRITTEN PERMISSION FROM OVERHEAD DOOR CORP.

[WWW.WAYNE-DALTON.COM](http://WWW.WAYNE-DALTON.COM)



10'x7' 9405 WESTFIELD  
4 SECTION/2 PANEL  
STOCKBRIDGE TOP SECTION  
CONSISTS OF (4) 20.8" SECTIONS