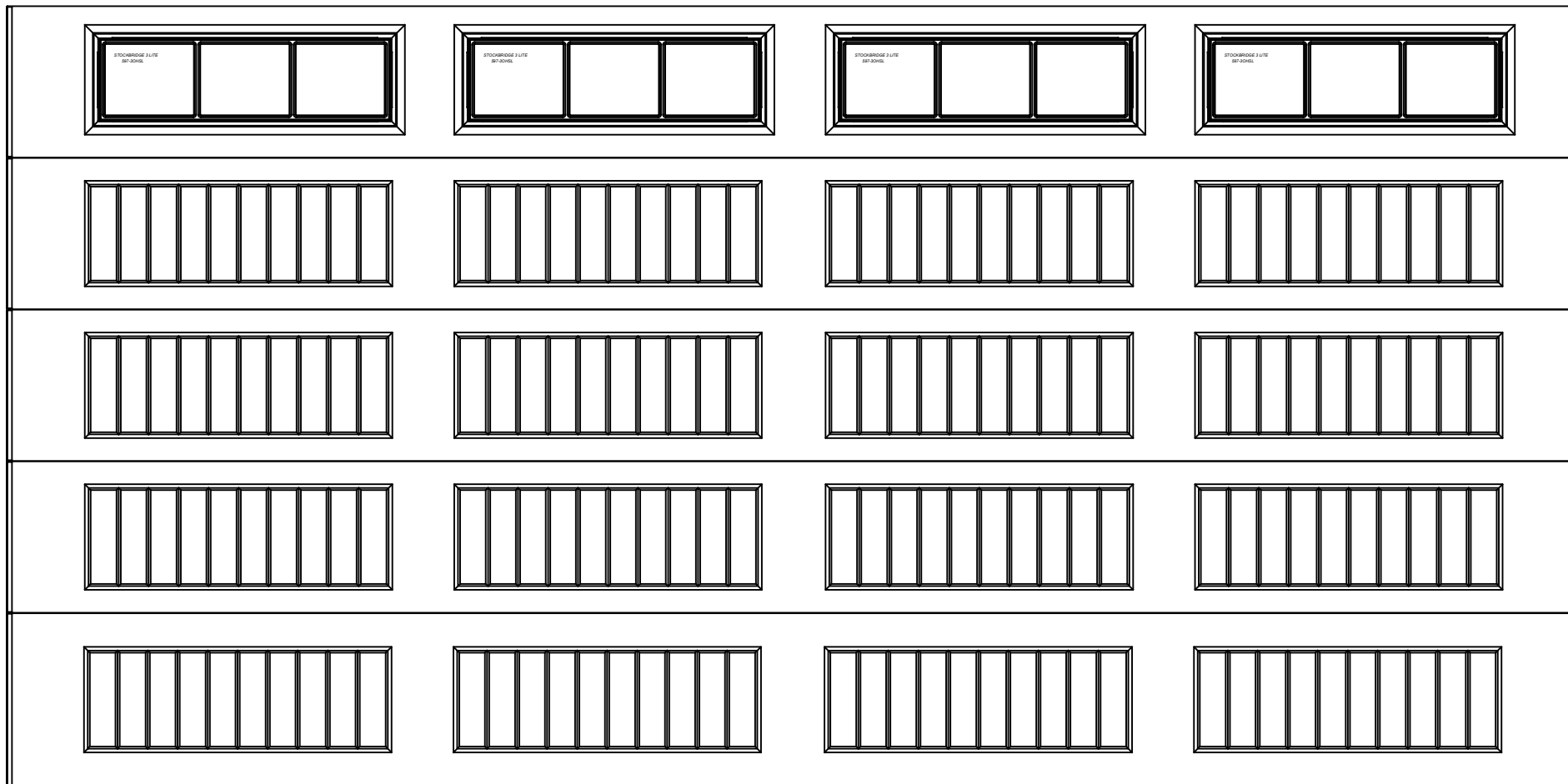


WAYNE DALTON, A DIVISION OF THE
OVERHEAD DOOR CORP.



18 X 9 9100/9605 SONOMA RANCH
5 SECTION/4 PANEL
STOCKBRIDGE IV 3LITE TOP SECTION SHOWN
CONSISTS OF (4) 20.8" SECTIONS & (1) 23.8" SECTION