

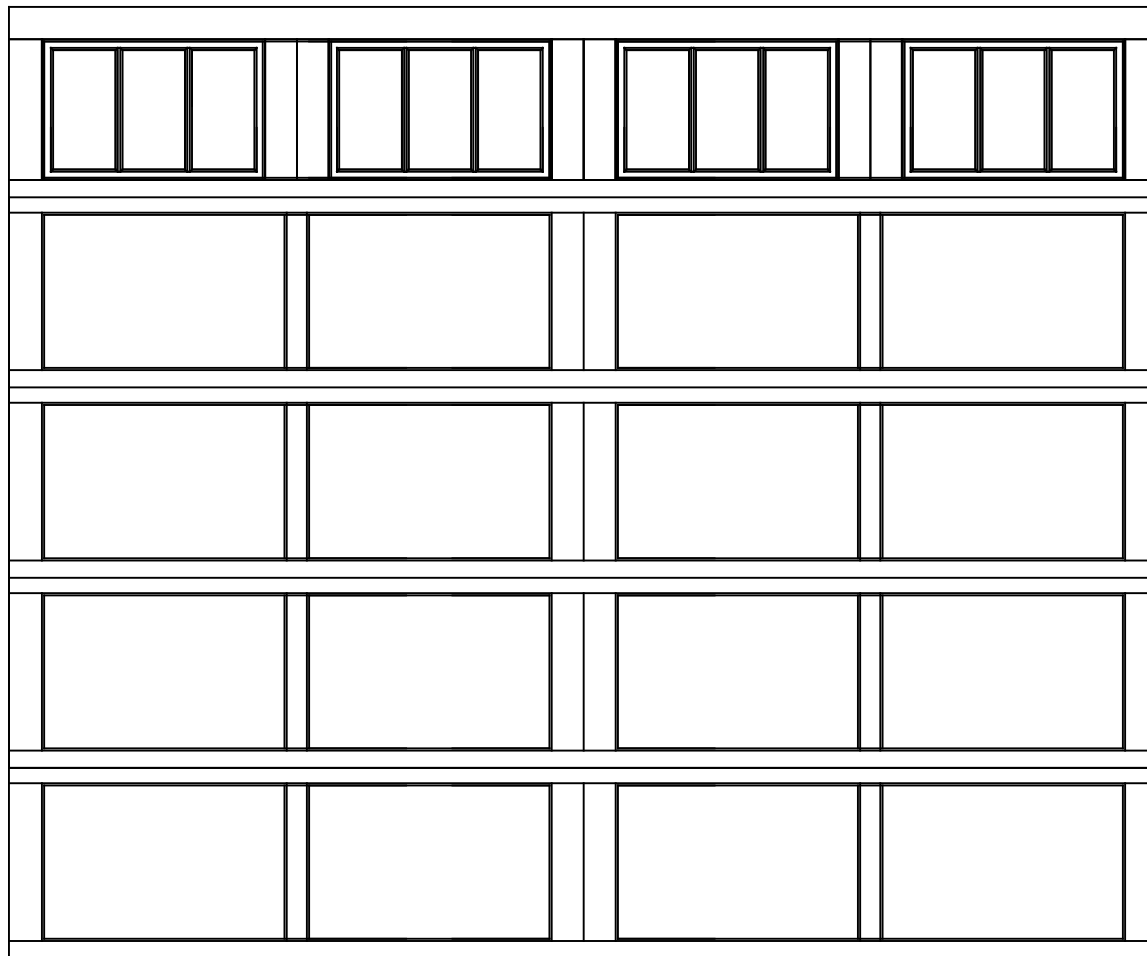


WAYNE DALTON, A DIVISION OF THE  
OVERHEAD DOOR CORP.

# EXTERIOR VIEW

WAYNE DALTON CONFIDENTIAL PROPRIETARY  
NOT TO BE DUPLICATED OR REPRINTED WITHOUT  
WRITTEN PERMISSION FROM OVERHEAD DOOR CORP.

[WWW.WAYNE-DALTON.COM](http://WWW.WAYNE-DALTON.COM)



12' x 10' 9700 NEWPORT DESIGN

5 SECTION/2 PANEL

12 LITES SQUARE TOP SECTION SHOWN

CONSISTS OF (5) 23.8" SECTIONS