

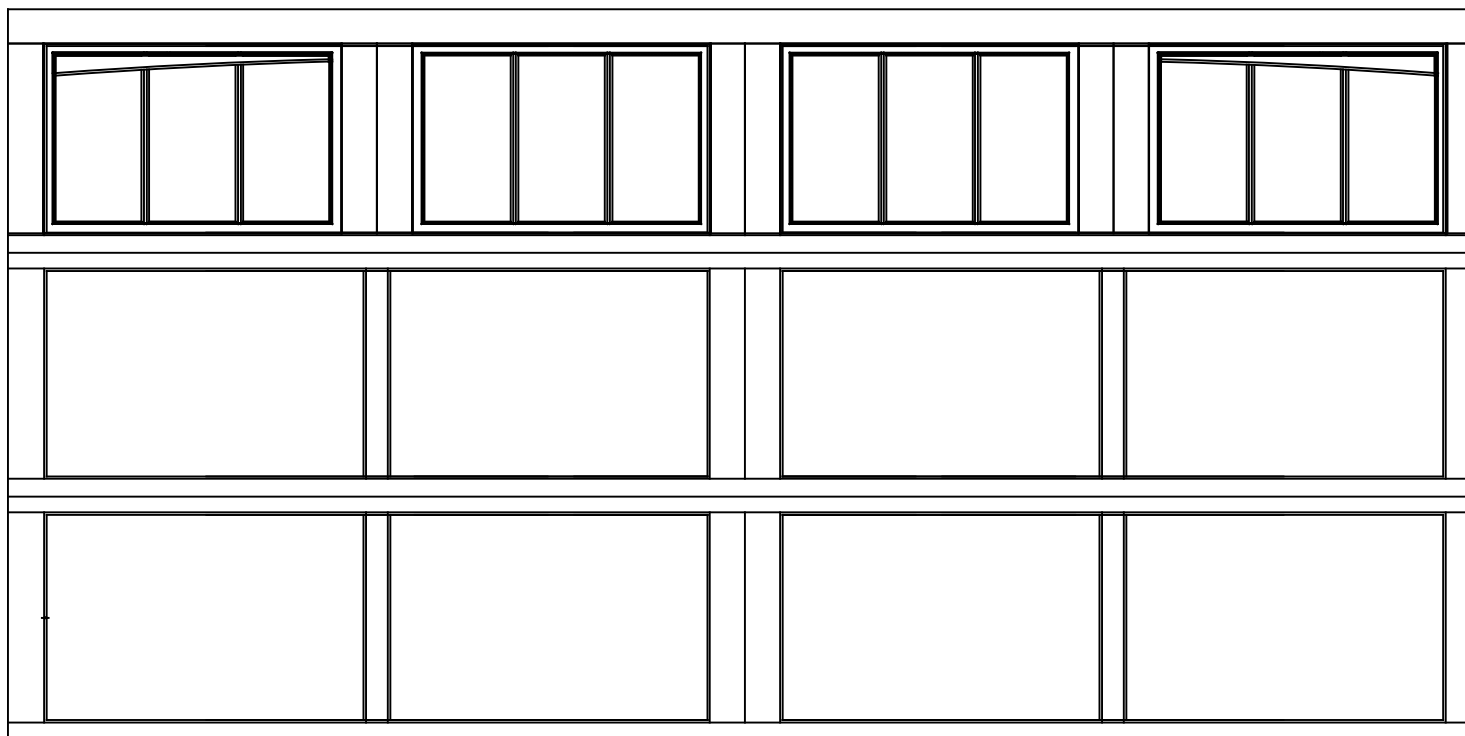


WAYNE-DALTON, A DIVISION OF THE
OVERHEAD DOOR CORP.

EXTERIOR VIEW

WAYNE-DALTON CONFIDENTIAL PROPRIETARY
NOT TO BE DUPLICATED OR REPRINTED WITHOUT
WRITTEN PERMISSION FROM OVERHEAD DOOR CORP.

WWW.WAYNE-DALTON.COM



14x7 9700 NEWPORT DESIGN

3 SECTION/2 PANEL

12 LITE SINGLE ARCH TOP SECTION SHOWN

CONSISTS OF (3) 27.73" SECTIONS