

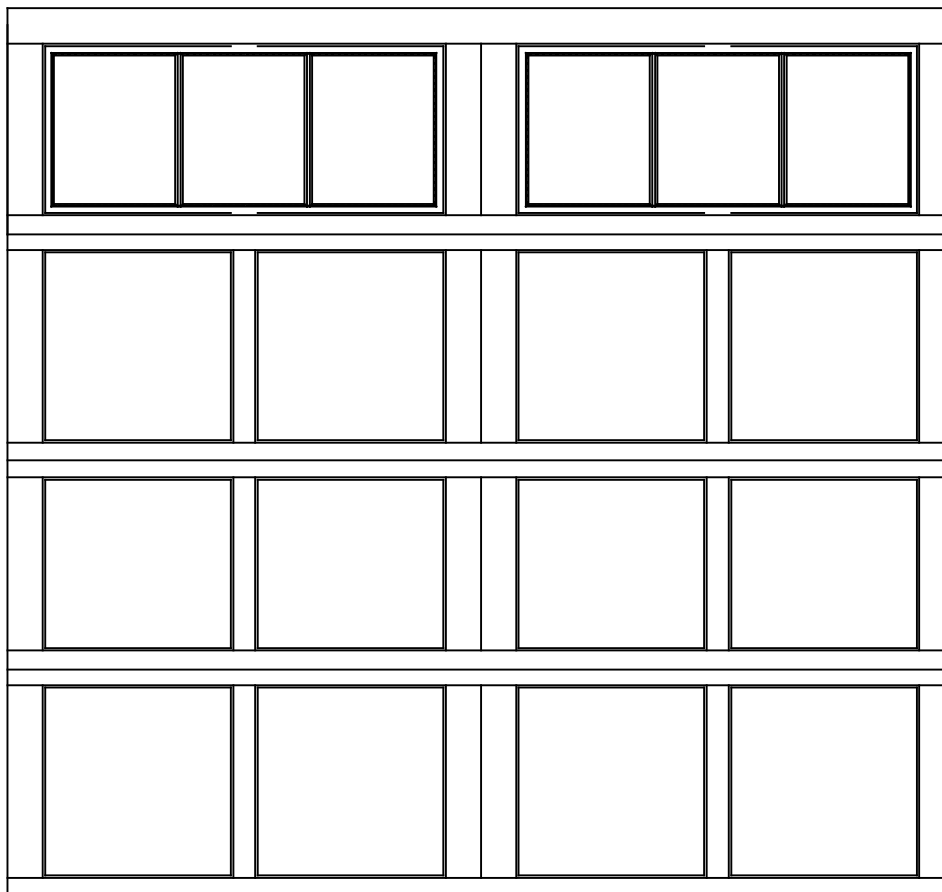


WAYNE-DALTON, A DIVISION OF THE  
OVERHEAD DOOR CORP.

## *EXTERIOR VIEW*

WAYNE-DALTON CONFIDENTIAL PROPRIETARY  
NOT TO BE DUPLICATED OR REPRINTED WITHOUT  
WRITTEN PERMISSION FROM OVERHEAD DOOR CORP.

[WWW.WAYNE-DALTON.COM](http://WWW.WAYNE-DALTON.COM)



9'x8'6" 9700 NEWPORT DESIGN  
4 SECTION/2 PANEL  
6 LITE SQUARE TOP SECTION SHOWN  
CONSISTS OF (1) 23.8" & (3) 25.73" SECTIONS