

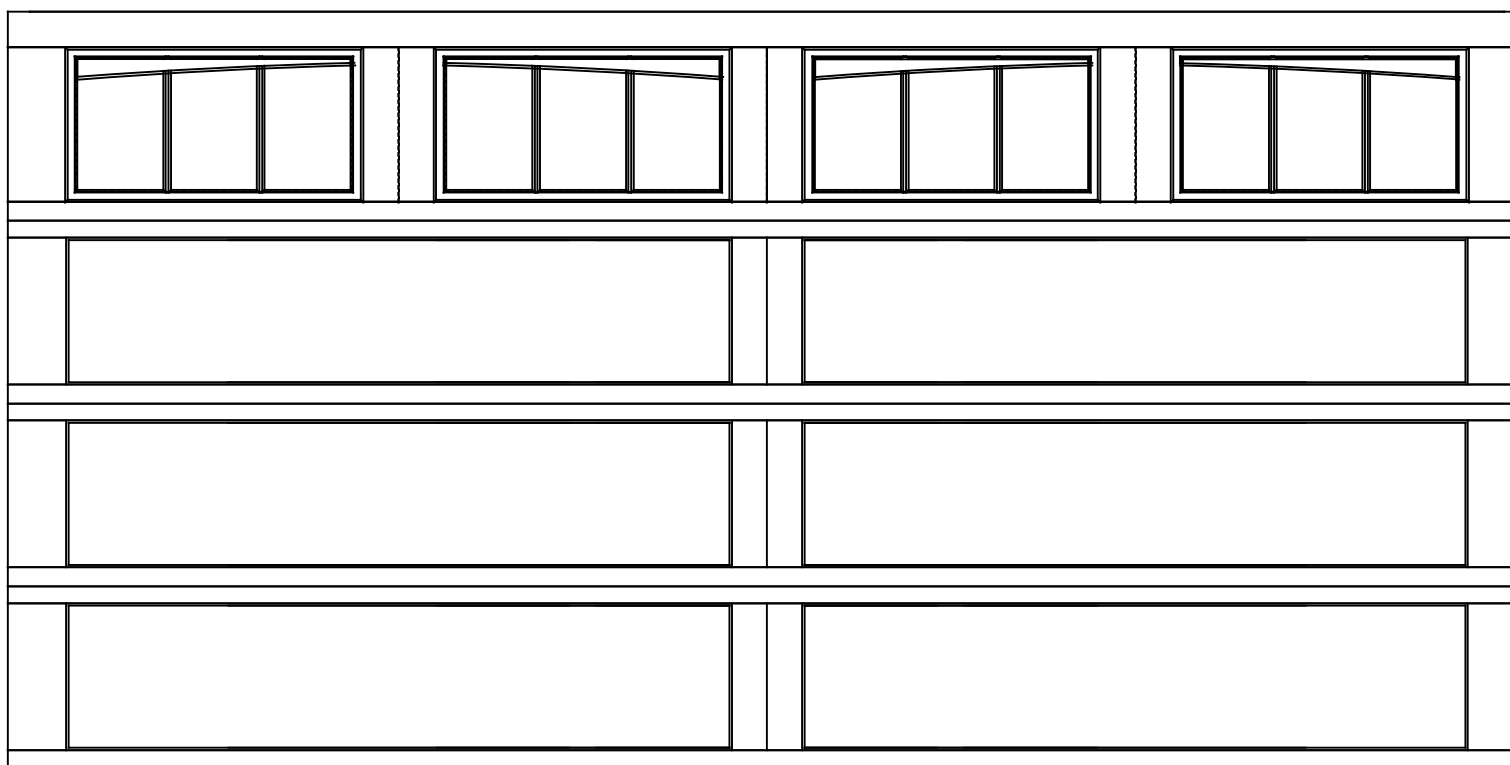


WAYNE-DALTON, A DIVISION OF THE
OVERHEAD DOOR CORP.

EXTERIOR VIEW

WAYNE-DALTON CONFIDENTIAL PROPRIETARY
NOT TO BE DUPLICATED OR REPRINTED WITHOUT
WRITTEN PERMISSION FROM OVERHEAD DOOR CORP.

WWW.WAYNE-DALTON.COM



14'5" x 7'3" 9700 WESTFIELD DESIGN

4 SECTION/2 PANEL

12 LITE DOUBLE ARCH TOP SECTION SHOWN
CONSISTS OF (1) 23.8" & (3) 20.8" SECTIONS