

# Windload Post

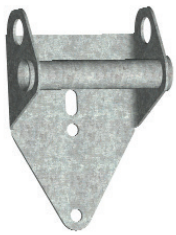
9100/9600/9900

Installation Instructions



See garage door owner's manual for warranty information.

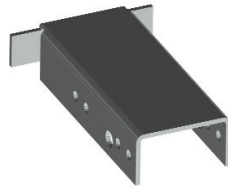
# Packaged Parts



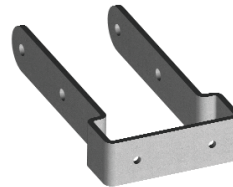
(1) HALF HINGE  
# 130352



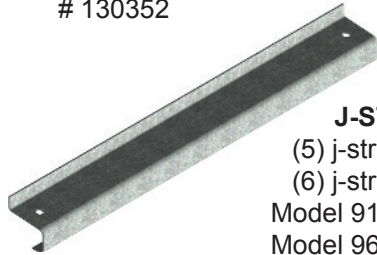
(2) HEADER LOCK BRACKETS  
# 141092



(1) TOP PLATE EXTENSION  
# 305205



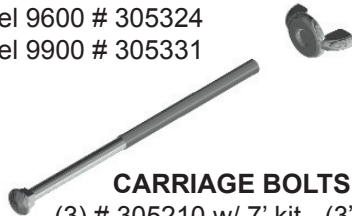
(1) TOP STRAP BRACKET  
# 305206



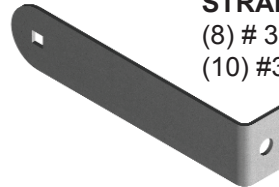
**J-STRUTS**  
(5) j-struts w/ 7' kit  
(6) j-struts w/ 8' kit  
Model 9100 # 305208  
Model 9600 # 305324  
Model 9900 # 305331



**STRAP BRACKETS**  
(5) # 305225 w/ 7' kit  
(6) # 305225 w/ 8' kit

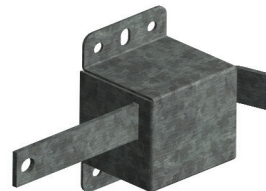


**CARRIAGE BOLTS**  
(3) # 305210 w/ 7' kit - (3" LG)  
(4) # 305210 w/ 8' kit - (3" LG)  
(1) #307529 w/ 7' & 8' kit's - (3-1/2" LG)



**STRAPS**  
(8) # 305209 w/ 7' kit  
(10) #305209 w/ 8' kit

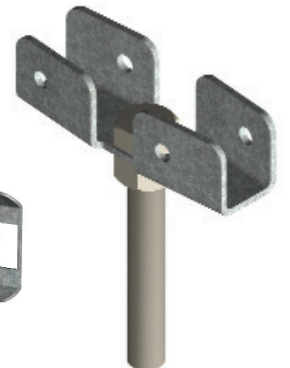
**WING NUTS**  
(4) # 305211 w/ 7' kit  
(5) # 305211 w/ 8' kit



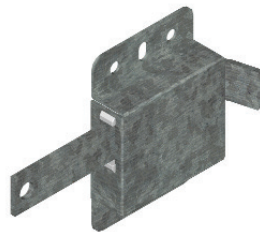
**9900 SLIDE LOCK KIT**  
# 245773



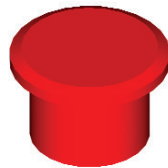
(1) WINDLOAD POST  
7' # 305207  
8' # 305332



(1) BOTTOM BRACKET ASSEMBLY  
# 305327



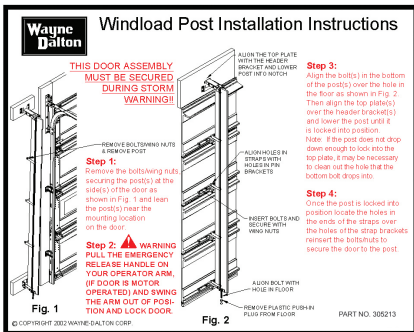
**9100/9600 SLIDE LOCK**  
# 292857



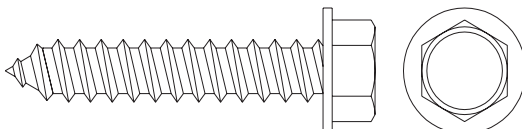
(1) PLASTIC PLUG  
# 305226



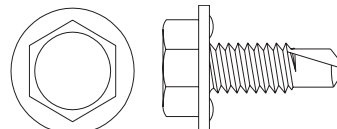
(1) POST TAG  
# 161384



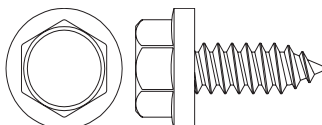
(1) POST INSTALLATION DECAL  
# 305213



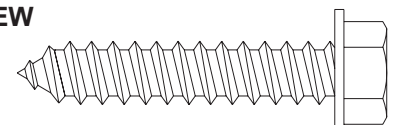
(8) 5/16" X 1-5/8" LAG SCREW  
# 100292



(18) 1/4-20 X 11/16" SELF-DRILLING SCREW  
# 300723

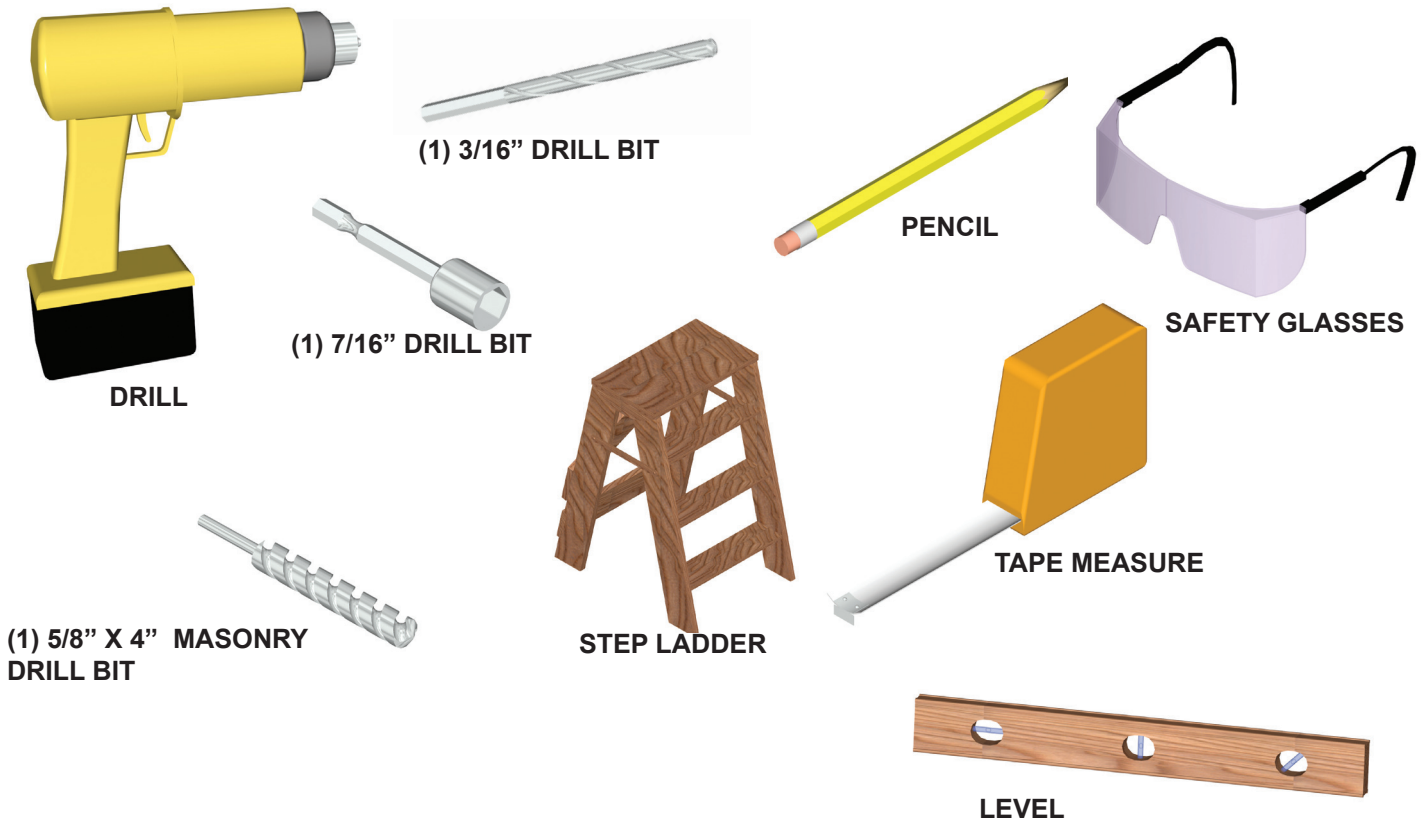


(12) 1/4-14 X 5/8" UNDERCUT SELF-TAPPING SCREW  
# 236565



(18) 1/4-20 X 7/8" SELF-DRILLING SCREW  
# 100507

## Required Tools



## Windload Post Installation

### J-Strut Installation

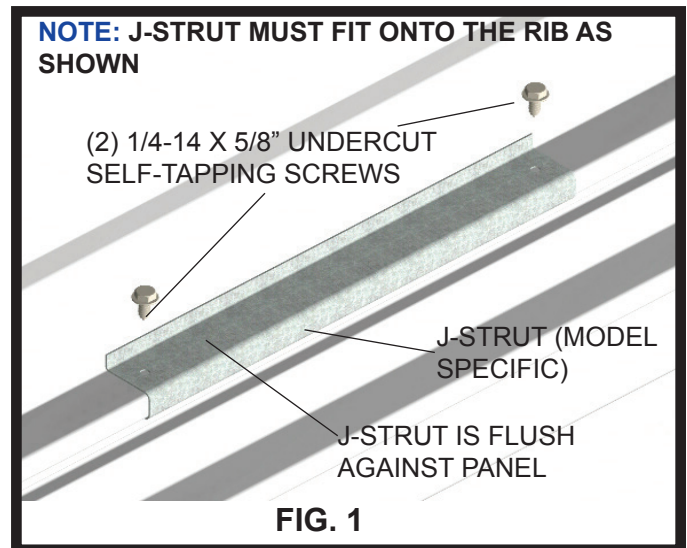
**IMPORTANT!** Refer to the **option code** drawing (supplied) for windload post location(s).

Place the 12" J-struts onto the lower rib of each door panel and center over the required position per the option code drawing. Secure J-struts using (2) 1/4-14 x 5/8" undercut self-tapping screws. (see **Fig. 1**)

**IMPORTANT!** Specific J-struts are required for different door models. Be sure to install the correct J-struts required for your door.

**NOTE:** J-struts are stamped for identification.

**⚠ WARNING: DO NOT INSTALL THE WRONG J-STRUTS ONTO A GARAGE DOOR, OR WINDLOAD FAILURE WILL OCCUR.**



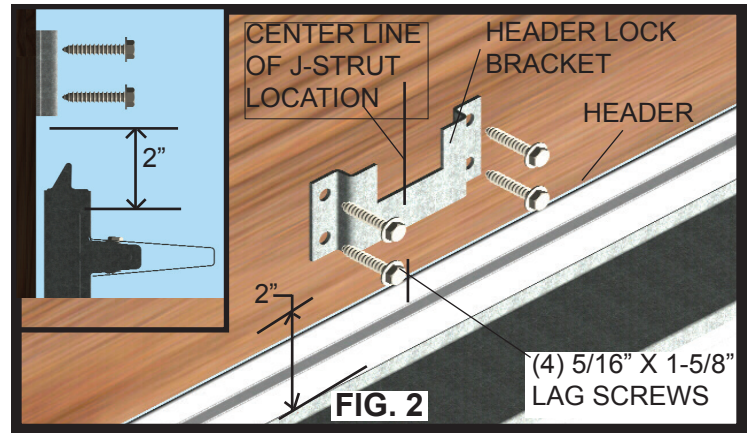


## Header Lock Bracket Installation

Mark a vertical line on the header, aligned with the center of the J-struts. Measure up 2" above the top of the door and mark a horizontal line. Center the header lock bracket with the vertical line and align the bottom of the header lock bracket with the horizontal line.

Secure the header lock bracket to the header using (4) 5/16" x 1-5/8" lag screws. (see **Fig. 2**)

**NOTE:** It is recommended that lag screws be pilot drilled using a 3/16" drill bit prior to fastening.

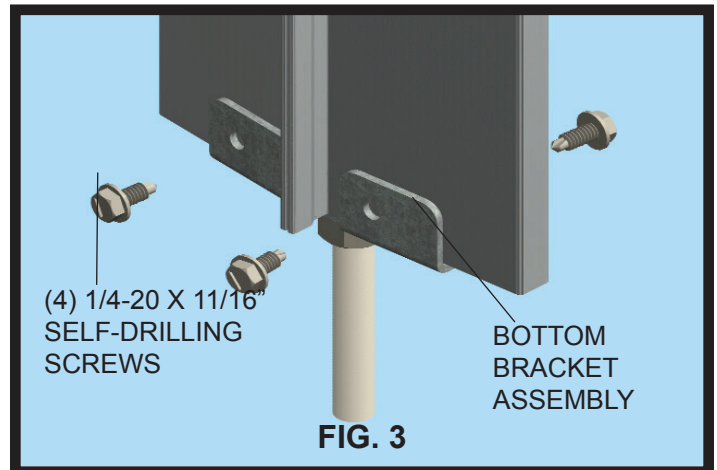


**IMPORTANT!** IF THERE IS DRYWALL OR OTHER MATERIALS COVERING THE HEADER IT IS REQUIRED THAT SUCH MATERIALS BE REMOVED FROM THE HEADER LOCK BRACKET LOCATION(S) AND REPLACED WITH THE SAME THICKNESS OF WOOD BEFORE INSTALLING THE HEADER LOCK BRACKET(S). IF THIS PROCESS MUST BE DONE, THE LENGTH OF THE LAG SCREWS MUST BE INCREASED TO INCLUDE THE THICKNESS OF WOOD MATERIALS SO THAT A MINIMUM OF 1-1/2" PENETRATION INTO THE EXISTING HEADER IS OBTAINED.

## Bottom Bracket Installation

Locate the bottom bracket assembly and align it to the bottom of the post. Secure the bottom bracket to the bottom of the windload post using (4) 1/4-20 x 11/16" self-drilling screws. (see **Fig. 3**)

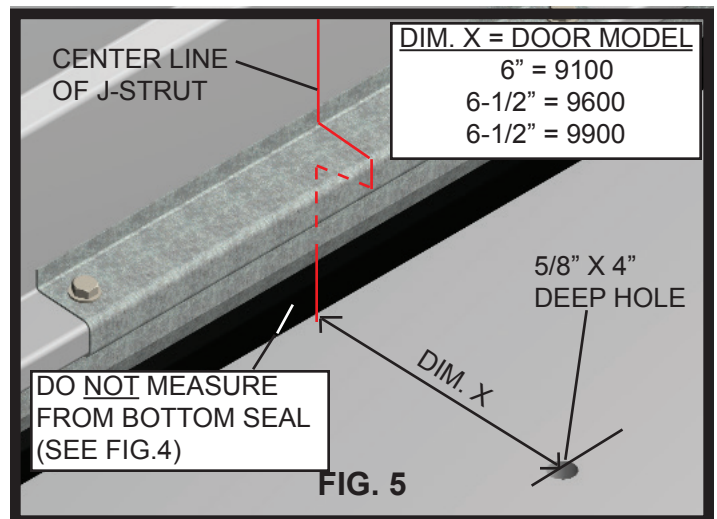
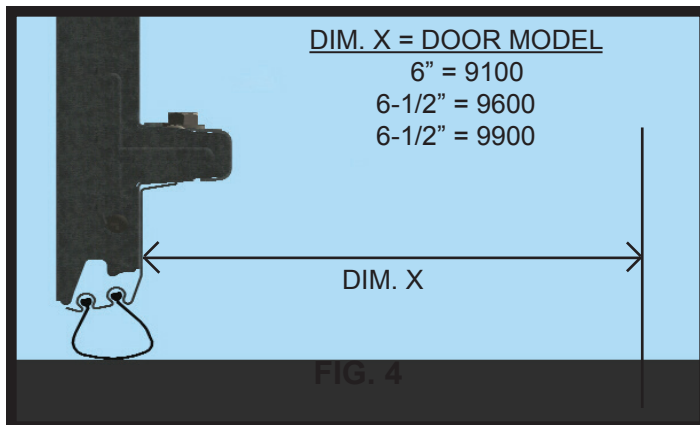
**NOTE:** The bottom of the windload post is flush while the top is offset.



## Post Hole Placement

At each windload post location, mark a center line on the floor that is aligned with the center of J-struts. Measure out from the back of the door (see **Fig. 4**) 6" for 9100 doors and 6-1/2" for 9600/9900 doors and make a second mark as shown in **Fig. 5**. Using a masonry bit, drill (1) 5/8" x 4" deep hole into the concrete. Clean out the hole.

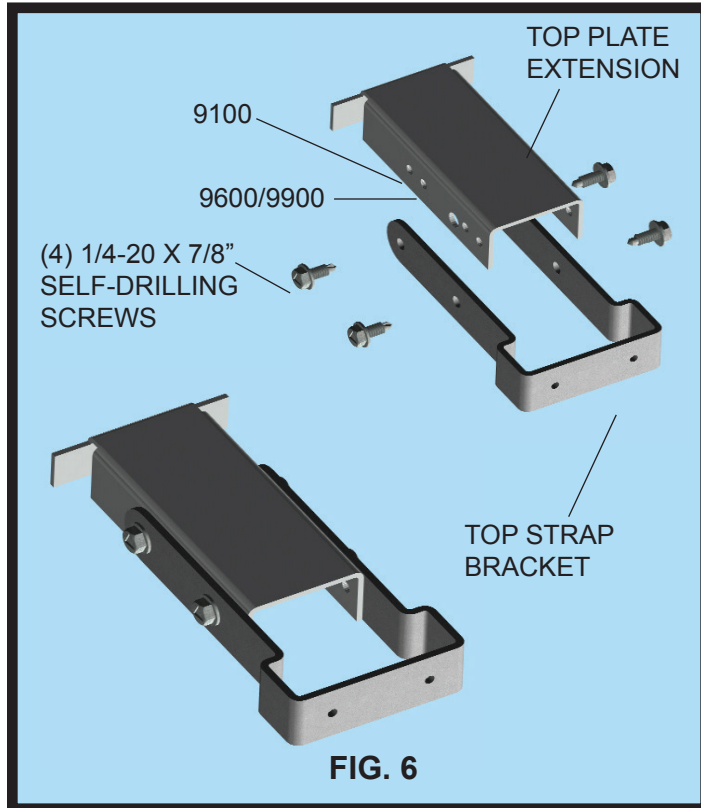
**IMPORTANT!** FOR PROPER OPERATION OF THE WINDLOAD POST, IT IS IMPORTANT THAT THE DIMENSION "X" BE HELD TO ASSURE THE POST IS INSTALLED PLUMB.



## Top Plate Extension Installation

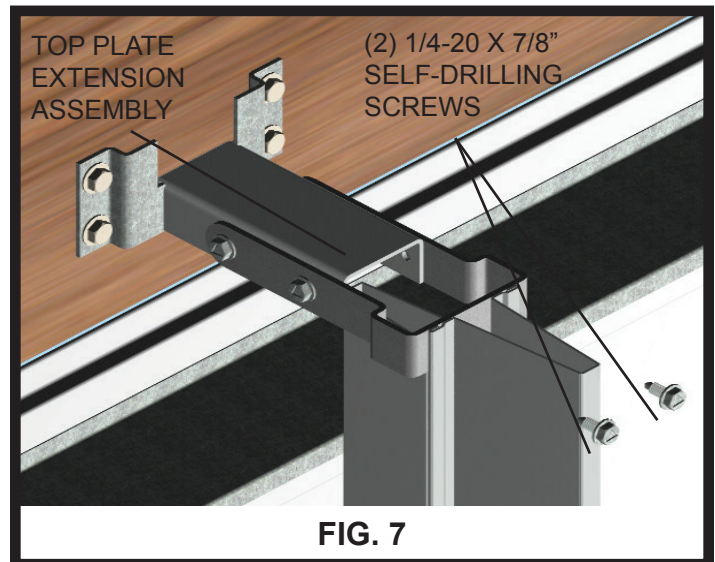
Locate the top plate extension and top strap bracket. Place the top strap bracket onto the top plate extension and adjust so that the holes in the top strap bracket align with the corresponding door model holes in the top plate extension. Hold position and secure using (4) 1/4-20 x 7/8" self-drilling screws. (see Fig. 6)

Slide the top plate extension assembly into the header bracket.



Now, install the windload post into the post hole in the floor and align the top of the windload post with the top plate extension assembly. Ensure that the post is level and plumb.

Using (2) 1/4-20 x 7/8" self-drilling screws, secure the windload post to the top plate extension assembly. (see Fig. 7)



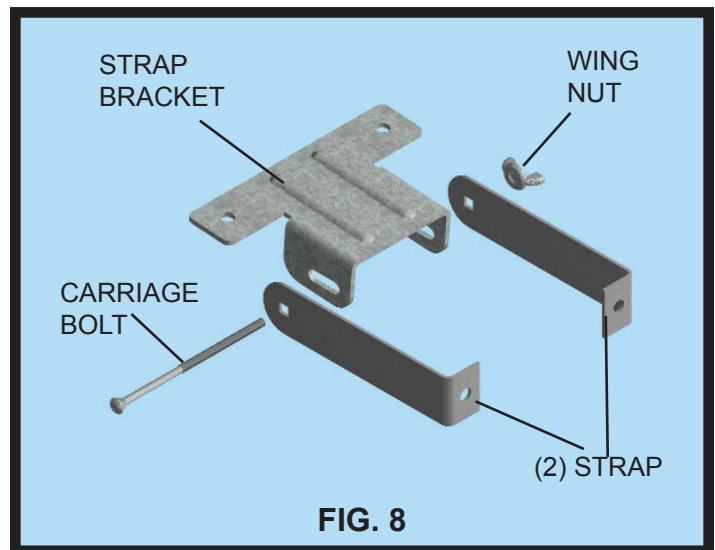
## Strap Bracket Installation

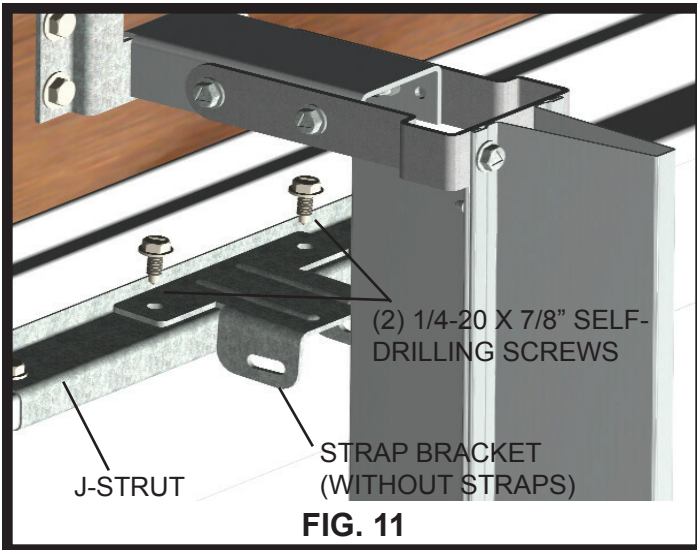
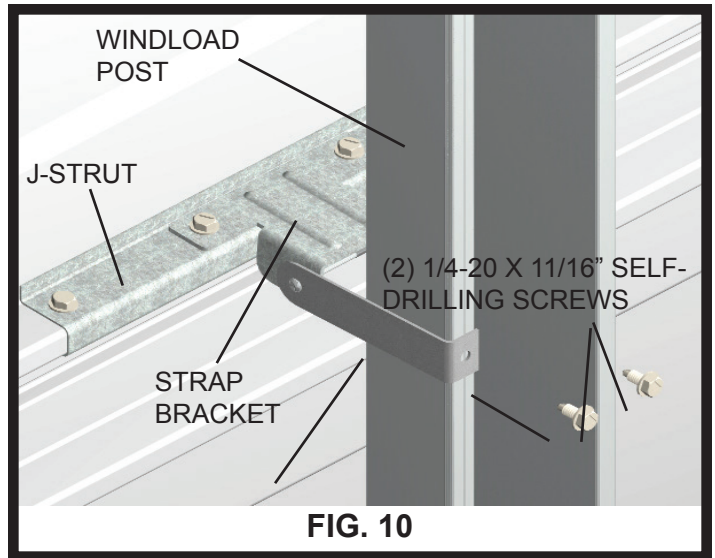
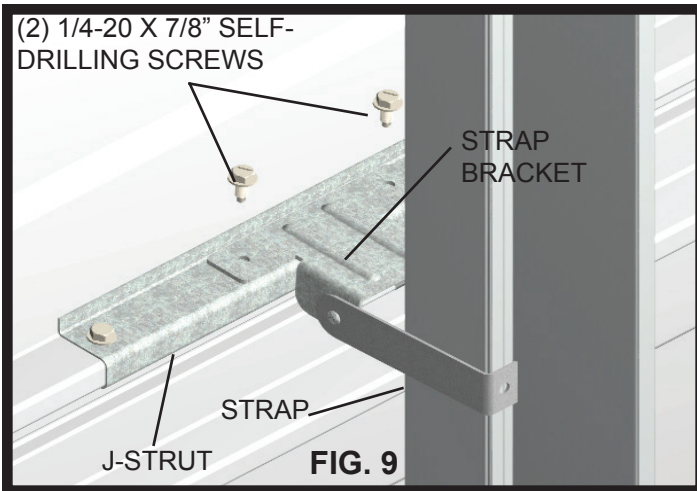
Loosely attach (2) straps to each center strap bracket using (1) 3" carriage bolt and wing nut. Attach (2) straps to the bottom strap bracket, with (1) 3-1/2" long carriage bolt and wing nut (see Fig. 8). Position the strap bracket assembly at each J-strut location and wrap the straps around the windload post.

Ensure that the windload post is plumb while locked into the header lock bracket and hole in floor. Secure strap bracket assemblies to the J-struts using (2) 1/4-20 x 7/8" self-drilling screws (see Fig. 9).

Now, secure each strap to the windload post using (1) 1/4-20 x 11/16" self-drilling screw. **NOTE:** Keep straps parallel and level. (see Fig. 10) Finish hand tightening the carriage bolts and wing nuts.

**NOTE:** Doors without a 3" U-bar on the top section will require an extra J-strut and strap bracket (strap bracket without straps) on the top rib of the top section. (see Fig. 11)



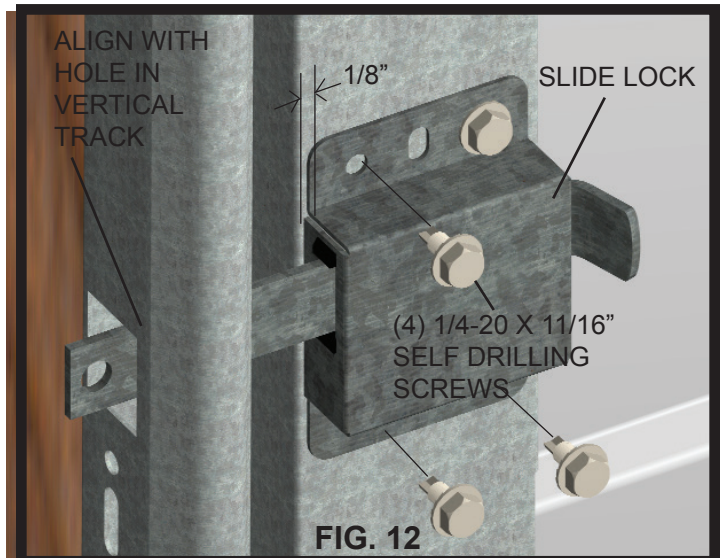


## Slide Lock Installation

Install slide lock on the second section of the door. Secure the lock to the section with (4) 1/4-20 x 11/16" self drilling screws. Square lock assembly with door section and hole in vertical track. The slide lock should be spaced approximately 1/8" from the section edge.

**IMPORTANT! SLIDE LOCKS AND OPERATORS SHOULD NOT BE ENGAGED AT THE SAME TIME. IF AN OPERATOR IS INSTALLED ON THE DOOR AND ENGAGED, BE SURE SLIDE LOCKS ARE DISENGAGED.**

**ONLY USE SLIDE LOCKS WHEN OPERATOR IS DISENGAGED FROM THE GARAGE DOOR.**

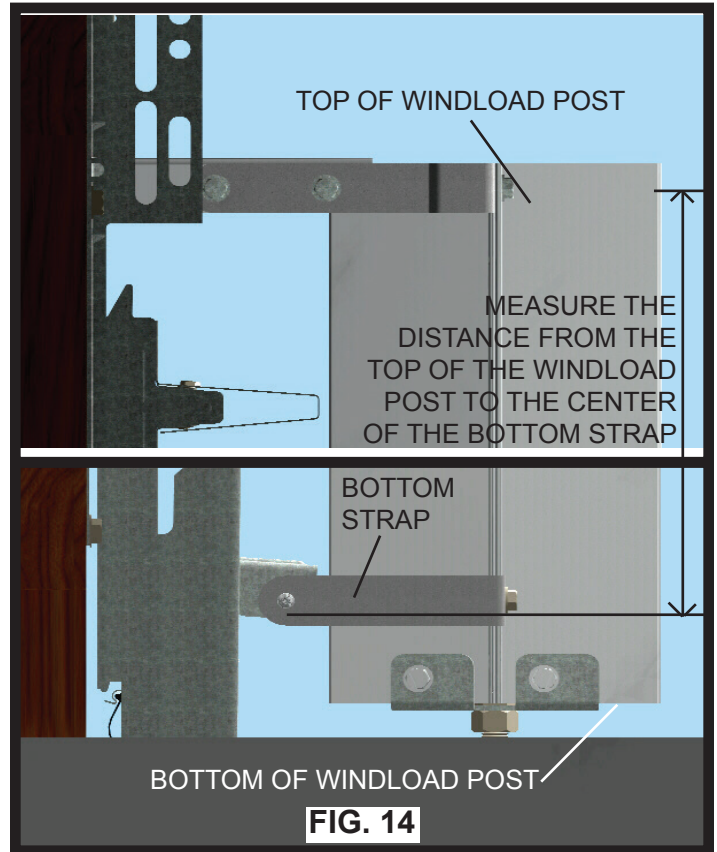
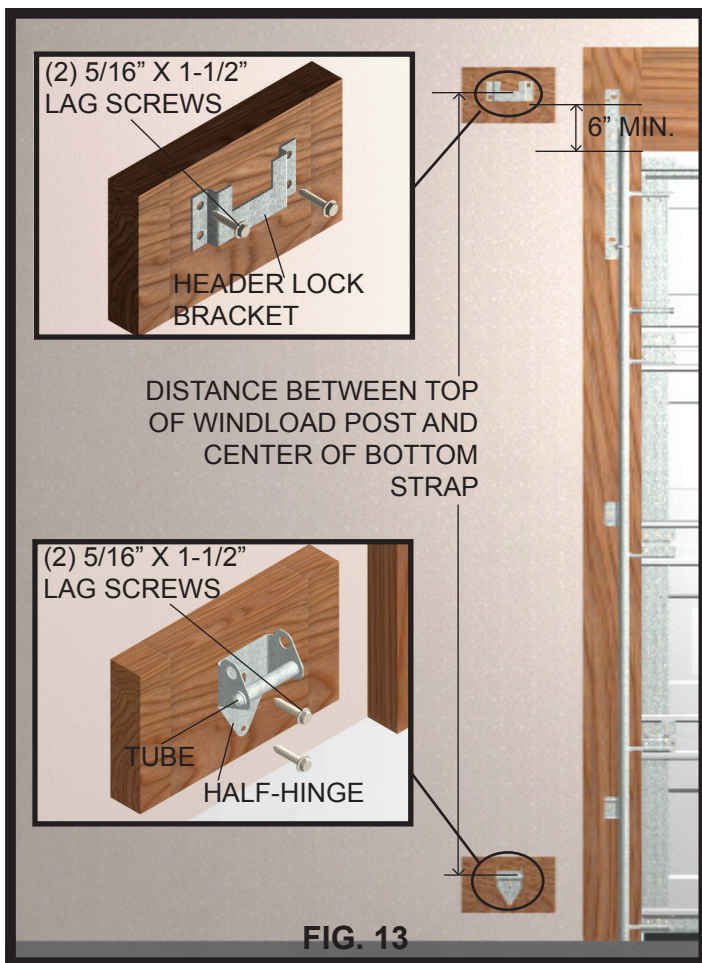




## Securing Post for Storage

Locate a convenient place to store the windload post(s). Measure and cut (2) 2 x 6" wood mounting blocks a minimum of 10" long for each windload post. Locate the mounting blocks horizontally on the wall as shown in **Fig. 13**. Secure them adequately to the wall at the top and bottom of the post storage location, with masonry anchors (concrete or const.), or 12-16 penny nails (wood const.). Measure a minimum of 6" above door as illustrated, and mount the extra header lock bracket(s) to the top mounting block(s) using (2) 5/16" x 1-5/8" lag screws as shown in **Fig. 13**.

Slide the windload post(s) into storage header bracket(s) and secure the bottom strap(s) to the half hinge(s) using the 3-1/2" carriage bolt and wing nut. Place all remaining wing nuts and carriage bolts into the remaining straps for storage. Insert plastic plug into hole in floor.



Measure the distance from the top of the windload post to the center of the bottom strap (see **Fig. 14**). Use that measurement for the displacement between the center of the extra header lock bracket and half-hinge tube. Position the half-hinge on the bottom mounting block and secure the half-hinge using (2) 5/16" x 1-5/8" lag screws. Repeat this step for remaining windload posts if necessary. (see **Fig. 13**)

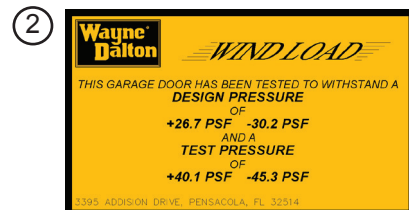
## Attaching the Installation Decals

After the installation is complete, locate in a obviously visible location on the inside of the garage door and the post(s) and place the provided installation labels and tag(s) onto the door and post(s) for future reference.  
**IMPORTANT! LABELS AND TAG(S) MUST BE ATTACHED TO BOTH DOOR AND POST(S).**

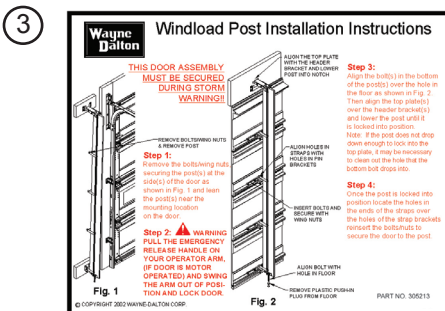
## Windload Label Locations



**Applied by Installer** - One (1) Emergency High Wind Situations Tags (161384) **per post** -Tags are to be applied to post(s) when stored on wall for constant reminder to consumer.



**Applied by Installer** - One (1) Windload PSF Label **per post**, based on the required design PSF load. Label is to be applied to windload post for reference.



**Applied by Installer** - One (1) Windload Post Installation Instructions Label (305213) -Only on doors specified with one or more posts. To be applied to inside of door, next to endcap of second section on side of the door where Post no. 1 is stored.

**MAKE SURE LABELS AND TAG(S) LIKE THE ONES ABOVE ARE INSTALLED ON THE DOOR AND POST(S)!**

CONTACT WAYNE-DALTON CORP. FOR A FREE REPLACEMENT DECAL.

**Please Do Not Return This Product To The Store.**

Contact your local Wayne-Dalton dealer. To find your local Wayne-Dalton dealer, refer to your local yellow pages/business listings or go to the **Find a Dealer** section online at [www.wayne-dalton.com](http://www.wayne-dalton.com)