

EXTRUDED ALUMINUM TRACK REPLACEMENT INSTRUCTIONS FOR DOOR MODELS 888 AND 889



This installation manual provides the trained door technician information required to replace the belts.
READ COMPLETE INSTRUCTIONS BEFORE PROCEEDING WITH REPAIR.

Refer to the your Door Installation Instructions for additional safety warnings and precautions. Manual may also be used as a reference for any items that are not addressed by this document.
Installation Manuals can be accessed at <https://www.Wayne-Dalton.com/Documents>.

This manual is intended ONLY for professional use by a trained door systems technician.

- Follow the standard work below when replacing the extruded aluminum track. Failure to do so may result in severe or fatal injury.
- Refer to your Door Installation Instructions for additional safety warnings and precautions. Manual may also be used as a reference for any items that are not addressed by this document.
- Door should be in the fully closed position for this project.

⚠ WARNING

These Doors are large, heavy objects that move. Since moving objects can cause injuries, your safety and the safety of others depends on you reading the information in this manual. If you have any questions or do NOT understand the information presented, call technical support at 1-800-764-1457 (Option 2).

In this section and those that follow, the words "**DANGER**", "**WARNING**", and "**CAUTION**" are used to stress important safety information. The word:

⚠ DANGER indicates an imminently hazardous situation which, if not avoided, is likely to result in death or serious injury.

⚠ WARNING indicates a potentially hazardous situation which, if not avoided, could result in death or serious injury.

⚠ CAUTION indicates a potentially hazardous situation which, if not avoided, may result in injury or property damage.

The word **NOTE** is used to indicate important steps to be followed or important considerations.

⚠ WARNING

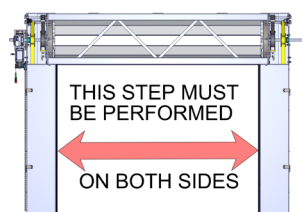
LINE POWER should **DE-ENERGIZED** at this time. In the following steps electrical components will be physically removed and new components mounted. Ensure that all incoming power supplies have been de-energized prior to beginning work on attachment of electrical control systems. Use proper Lock Out/Tag Out procedures. Do NOT connect components to electrical supply until directed to do so. Failure to follow this warning could result in serious injury or death as well as equipment damage.

1. With the door in the fully closed position, remove the bolts that hold the guide covers in place. Set bolts aside in a safe place and open guides, as shown in **FIG 1.0**.

NOTE: Guide covers swing open on hinges, or can be lifted off hinge pins and removed to ease installation.



FIG 1.0



2. Remove the bolts from the aluminum track and remove the exterior guide from the guides. Set bolts and tracks aside in a safe place. Starting at the top portion of the guide and using a flat screwdriver, gently pry the exterior guide from the angle, as shown in **FIG 2.0**.

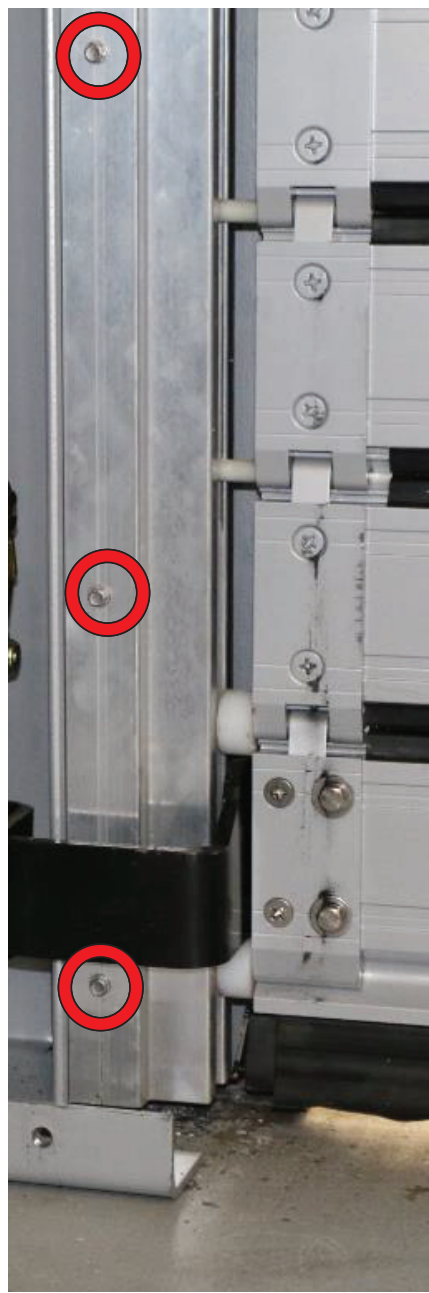
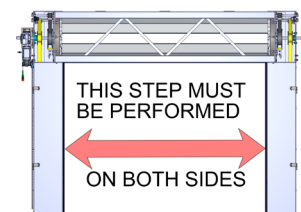
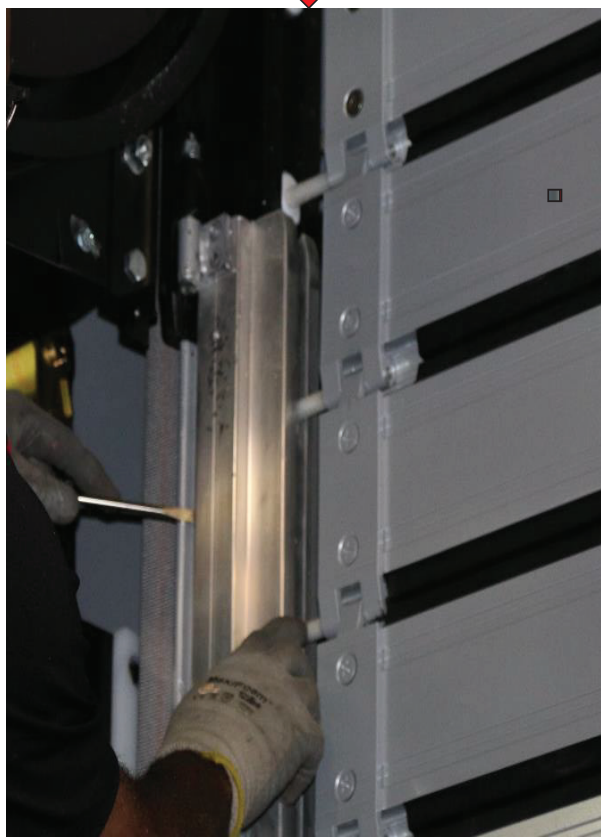


FIG 2.0



3. Remove the bolts holding the track in place as shown in **FIG 3.0**. Remove the track and discard.

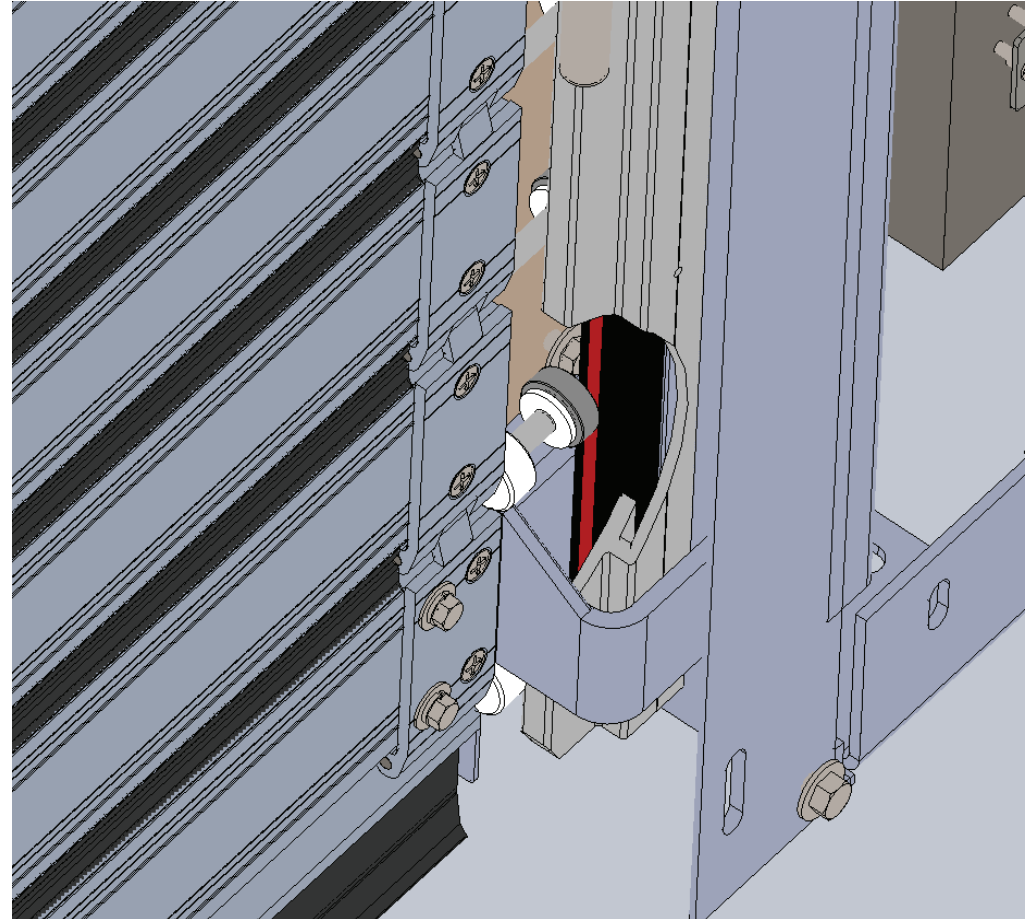
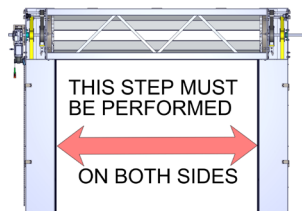


FIG 3.0



4. Install the new track and re-install the bolts into the new track, as shown in **FIG 4.0**.



FIG 4.0

5. Set exterior guide into angle. Using a flat screwdriver and starting at the bottom, re-install the exterior guide back into the angle. Re-install the exterior guide into the angle. Re-install the bolts to secure the exterior guide in place, as shown in **FIG 5.0**.

RE-ENERGIZED the power to the power supply. Cycle door a few times to ensure smooth movement (visual and feel). Close or re-attach the guide covers, as shown in **FIG 1.0**.

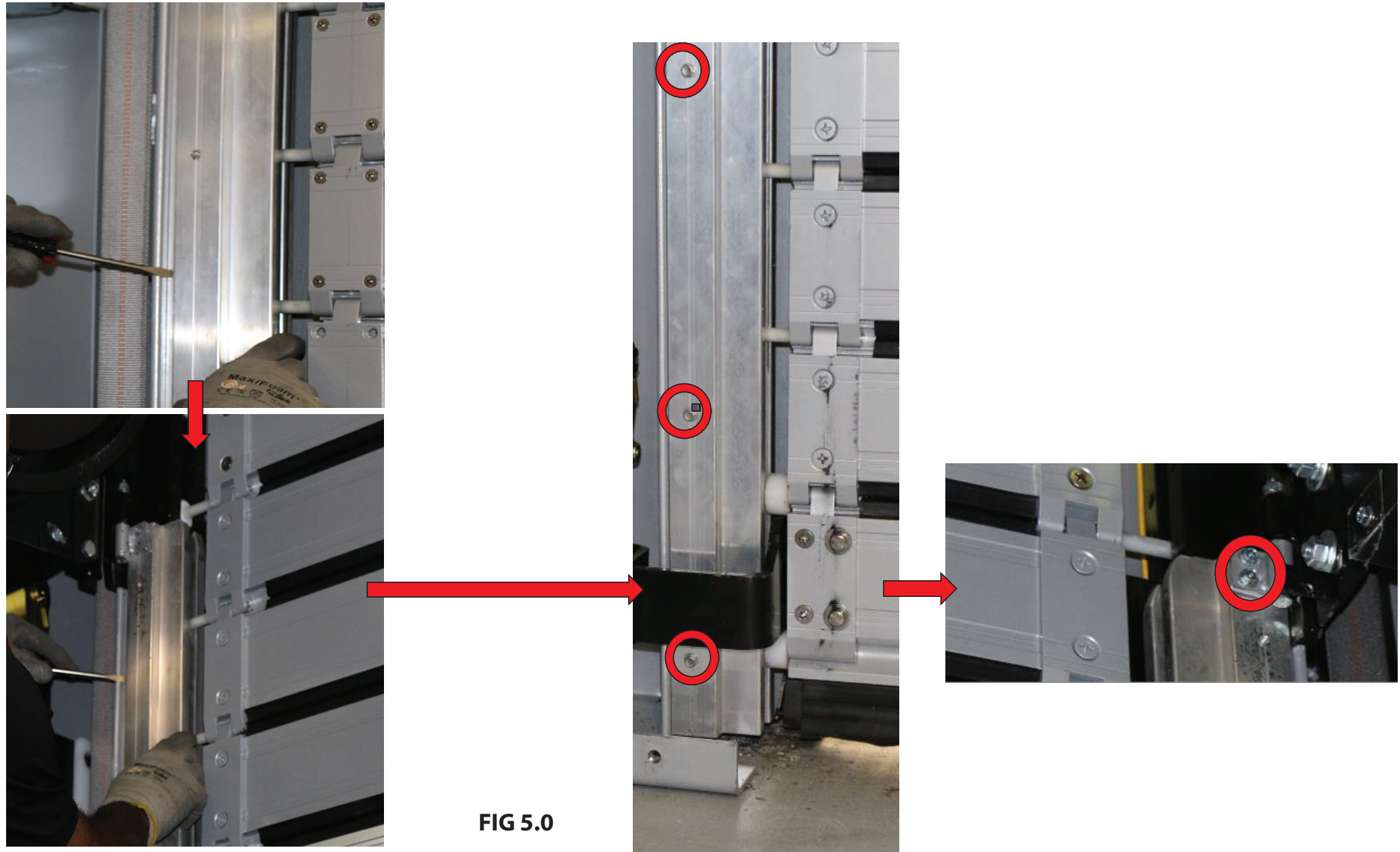


FIG 5.0